

WELS 2014 SURVEY OF ALUMNI WHO GRADUATED
SUMMER 2012 THROUGH SPRING 2013

Descriptive Statistics

Report 2014-07

John Krieg
Beth Hartsoch
Linda Clark
Chris Stark

December, 2014
OFFICE OF SURVEY RESEARCH
WESTERN WASHINGTON UNIVERSITY



Table of Contents

	Page
Executive Summary	2 - 3
A. Characteristics of WWU Alumni and Survey Respondents	4
B. University-Level Responses	5 - 19
C. College-Level Responses	20 - 33
D. College of Business and Economics	34 - 40
E. Woodring College	41 - 47
F. College of Fine and Performing Arts	48 - 54
G. College of Humanities and Social Sciences	55 - 64
H. Huxley College	65 - 71
I. College of Sciences and Technology	72 - 81

WELS 2014 Survey of Alumni Who Graduated Summer 2012 Through Spring 2013

EXECUTIVE SUMMARY

Every other year the Office of Survey Research (OSR) contacts recently graduated Western students to inquire into their current activities and ask for their retrospective thoughts on their Western experience. In the spring of 2014 OSR surveyed alumni who completed their undergraduate degrees between summer, 2012 and spring, 2013. This report details the questions asked on that survey and summarizes responses for the university and by college and department. Initially, OSR solicited responses using e-mail contacts. These were initiated in March 2014. Non-respondents received two additional requests and then OSR contacted non-respondents by telephone to request their participation. Of the 3306 students who graduated between summer, 2012 and spring, 2013, OSR received valid responses from 1091 students, a response rate of 33.0%.

This report contains summaries of questions that deal with satisfaction with Western's contribution to academic skills, alumni's current activities, their financial situation including earnings and educational debt. Departments may submit questions for this survey in order to examine topics in greater detail. We look forward to serving your needs by including your questions in the future.

As with any survey, readers should be concerned about sample selection bias, which is bias that arises because survey respondents are not a random selection from the population of survey recipients. While sample selection bias in this survey is mitigated by proper survey techniques and a high response rate, its presence should be considered when evaluating the data. Section A presents basic demographic and academic statistics of the respondents and non-respondents. As found in the general literature on surveys, women were more likely to complete the survey than men (59.6% of respondents were women whereas 57.1% of alumni are women). Respondents were more likely to be white (79.7% v. 77.0%), earned a higher WWU GPA (3.23 v. 3.17), and were less likely to be a transfer student (30.4% v. 36.1%). Spring graduates were more likely to respond (60.1% v. 53.1%) suggesting that the survey results are more representative of more recent graduates and of students that are more likely to be on traditional academic schedules. On the other hand, respondents and non-respondents were similar in their ages, time-to-degree, and credits earned on campus. Section B of this report contains university-level summary statistics of each question asked. These data are then disaggregated by college in Section C and then by department in Sections D through I.

While OSR leaves it to the reader to decide what is interesting in this report, here we highlight a few findings that the wider campus may find interesting. When asked about their current principal activity, 62% of alumni responded that they were currently employed full-time, an increase of seven percentage points over the survey results from two years ago. An additional 13% indicated that they were working part-time, a decrease by three percentage points from the past survey. In addition to these, 9% of alumni attend graduate or professional school, a decrease of three percentage points relative to 2012. Among those whose principal activity is

employment, 81% are working in Washington State while 3% work in each of Oregon and California. About one-fifth of respondents were offered their first career-oriented job while still attending Western and one-quarter received their job within three months of graduation. The remainder were evenly split between getting a job within three to six months of graduating, more than six months after graduating, and not having received a career-oriented job since graduation. Forty percent of working alumni say their job is in the same field in which they majored while at Western, and another 30% are working in a related field. Among employed alumni, 19% said Western prepared them for success in the job market “very well” while an additional 36% said they were “well” prepared. The average total annual salary of full-time working alumni in this survey is \$38,014, and increase of 3.1% over the prior survey.

Among the students in graduate or professional school, 87% claim that Western “well” or “very well” prepared them for their current studies. Eighty-three percent of students are studying in the same or related field as their major. We also asked these students the names of the institution and degree program they are pursuing, and can provide these responses to the campus community upon request.

Respondents report an average of \$14,380 in outstanding educational debt; a very small increase over the reported debt of \$14,272 from the alumni survey two years ago. About three-fifths of respondents claimed their education debt impacted their job choices and where they live, while a slightly higher percent of alumni claim their debt has impacted their educational goals.

One feature of all of OSR’s student surveys is that they can be tracked by their W number providing the opportunity to merge our data with other university sources. This ability opens the door to longitudinal analysis. OSR is happy to share or provide support for these data upon request.

Clarifying Notes

1. Unless otherwise noted, percentages given are of the number responding to a question divided by the number that asked that question. This denominator may contain fewer students than the number responding to the survey due to question branching, random selection of respondents for certain questions, and survey attrition.
2. In many cases percentages do not sum to one hundred because of rounding.
3. A blank space indicates no respondent chose that response option. A report of 0% indicates that the percent of responses rounded down to, but is not equal with, zero.
4. This report presents responses from all students completing any question regardless of whether the respondent completed the survey or not.

A. Comparison of All Sampled Alumni and Survey Respondents: Spring 2014

A.1. Characteristics of WWU alumni and survey respondents

	Non-Respondents	Respondents	All Alumni
N	2,215	1,091	3,306
Average number of months between graduation and survey completion	13.1	12.5	12.9
Graduated summer 2012	14.0%	10.4%	12.8%
Graduated fall 2012	19.1%	16.0%	18.1%
Graduated winter 2013	17.4%	13.5%	16.1%
Graduated spring 2013	49.6%	60.1%	53.1%
Male	44.1%	40.4%	42.9%
Caucasian	75.6%	79.7%	77.0%
Black	3.0%	2.5%	2.8%
Hispanic	5.1%	4.5%	4.9%
Asian/Pacific Islander	10.2%	7.1%	9.2%
Native American	2.6%	2.6%	2.6%
Other, Unknown	1.9%	2.7%	2.2%
International Student	1.5%	0.8%	1.3%
Mean WWU GPA	3.14	3.23	3.17
Mean Cumulative WWU Hours Earned	156	162	158
Mean Years to Degree	3.82	3.72	3.79
Mean Age	24.9	24.4	24.7
Median Age	24	23	24
Transfer Student	39.0%	30.4%	36.1%
Running Start Student	7.8%	11.6%	9.1%
Off Campus Program	4.8%	2.7%	4.1%

B. University-Level Responses

Satisfaction and Principal Activities

B.1. How satisfied are you with Western's contribution to your development in each of the following skills?

	N	Very dissatisfied	Somewhat dissatisfied	Neither satisfied nor dissatisfied	Somewhat satisfied	Very satisfied
Writing skills	1,030	2%	5%	14%	42%	38%
Oral communication skills	1,033	2%	5%	15%	40%	38%
Critically evaluate information	1,033	2%	3%	8%	35%	52%
Work or learn independently	1,035	2%	3%	10%	33%	51%
Work cooperatively in a group	1,032	2%	4%	13%	32%	50%
Appreciation of the arts	1,027	3%	5%	29%	29%	34%
Apply scientific principles and methods	1,033	2%	6%	28%	33%	32%
Apply quantitative principles and methods	1,028	2%	6%	24%	34%	34%
Awareness of cultural and social differences among people	1,032	2%	3%	14%	28%	52%
Use library resources for research	1,027	3%	8%	24%	32%	33%
Work effectively with technology appropriate for your field	1,031	3%	7%	13%	36%	41%

B.2. Which of the following best describes your current PRINCIPAL activity?

N	1,083
Employment, full-time paid	62%
Employment, part-time paid	13%
Seeking Employment	7%
Graduate or professional school, full-time	8%
Graduate or professional school, part-time	1%
Additional undergraduate coursework	1%
Military service	
Volunteer activity (e.g. Peace Corps, AmeriCorps)	4%
Starting or raising a family	1%
Traveling	2%
Other, please specify	3%

B.2.a. Other current principal activities. (Open-ended question asked of respondents who answered "other" in B.2.) (N=27) (Responses included: employed full-time and graduate school full-time; planning to attend graduate school; internship; starting my own business; taking time off to travel.) (Text responses available on request.)

Principal Activity: Education

Explanatory Note: Tables numbered B.2.b are primarily responses from alumni pursuing further education. Exceptions are noted.

B.2.b.1. What are the names of the institution, degree and program in which you are enrolled? (Open-ended question asked of respondents who indicated in B.2. that their current principal activity is education.) (N=100) (Text responses available on request.)

B.2.b.2. When did you start this program? (Asked of respondents who did not major in General Studies and who indicated in B.2. that their current principal activity is education.) (Respondents provided month and year, OSR calculated the time between degree completion and start date of new educational program).

N	98
Prior to graduation	5%
Less than 3 months after graduation	48%
4-6 months after graduation	11%
7-9 months after graduation	12%
10-12 months after graduation	5%
A year or more after graduation	18%

B.2.b.3. How is this program related to your major at Western? (Asked respondents who did not major in General Studies and who indicated in B.2. that their current principal activity is education.)

N	97
Same field	37%
Related field	46%
Different field	17%

B.2.b.4. How well did your education at Western prepare you for success in your current educational program? (Asked of respondents who indicated in B.2. that their current principal activity is education.)

N	101
Not at all	
A little	4%
Somewhat	10%
Well	50%
Very well	37%

Principal Activity: Education (cont.)

B.2.b.5. How valuable were the following in preparing you for your current educational program? (Asked of respondents who indicated in B.2. that their current principal activity is education.)

	N	Not at all valuable	A little valuable	Somewhat valuable	Valuable	Very valuable
Classes in your major	98	0%	3%	8%	37%	52%
Classes outside your major	98	8%	18%	29%	35%	10%
Other experiences at Western	98	2%	9%	27%	27%	36%

B.2.b.5.a. What experiences at Western prepared you for your current educational program? (Open-ended question asked of respondents who indicated in B.2.b.5. that their other experiences at Western were "somewhat valuable", "valuable" or "very valuable" in preparation for their current educational program.) (N=51) (Responses included: compass to campus; undergraduate laboratory research; Everything I did in my major: research, TAing and classes.) (Text responses available on request.)

B.2.b.6 Are you currently employed? (Asked of respondents who indicated in B.2. that their current principal activity is education, raising a family, or traveling.)

N	150
Yes	54%
No	46%

B.2.b.6.a. Since graduating from Western, have you sought employment? (Asked of respondents who indicated in B.2.b.6. that they are not currently employed.)

N	69
Yes	54%
No	46%

B.2.b.6.b. Is your current job full- or part-time? (Asked of respondents who indicated in B.2.b.6. that they are currently employed.)

N	81
Full-time	37%
Part-time	63%

Principal Activity: Education (cont.)

B.2.b.6.c. How closely is your {current/primary} job related to your major program at WWU? (Asked of respondents who indicated in B.2.b.6 that they are currently employed.)

N	78
Same field	32%
Related field	32%
Different field	36%

B.2.b.6.c.1. Did you seek employment in your academic field? (Asked of respondents who indicated in B.2.b.6.c that their current job is in a "related field" or "different field" from their major/ program at Western and did not major in general studies while at Western.)

N	89
Yes	62%
No	38%

B.2.b.6.c.1.a. Why did you choose not to seek employment in your academic field? Choose all that apply. (Asked of respondents who indicated in B.2.b.6.c.1 that they did not seek employment in their academic field.)

N	24
I did not feel adequately prepared	4%
There were no good-paying jobs in my field	8%
I did not know enough about the job market	25%
I was not interested in a career in my field	8%
I am planning to pursue further education	58%
My geographic preference limited my options	8%
Other, please specify below	42%

B.2.b.6.c.1.a.1. Other reason why I chose to not seek employment in my academic field (Open-ended question asked of respondents who indicated that they did not seek employment in their academic field.) (N=5) (Text responses included: I don't know what jobs I was qualified for; Started post-bac program.) (Text responses available on request.)

Principal Activity: Employment

Explanatory Note: Explanatory Note: Tables numbered B.2.b are primarily responses from alumni pursuing employment. Exceptions are noted.

B.2.c.1. Do you have more than one job? (Asked of respondents who indicated in B.2. that their current principal activity is employment full-time or employment part-time.)

N	755
Yes	17%
No	83%

Explanatory Note: Respondents who indicated in B.2.c.1 that they had more than one job were asked in subsequent questions to respond regarding their 'primary' job. Conversely, respondents indicating in B.2.c.1 that they had only one job were asked about their 'current' job.

B.2.c.2. How closely is your {current/primary} job related to your major at WWU? (Asked of respondents who indicated in B.2. that their current principal activity is "employment, full-time paid", "employment, part-time paid", and were not a general studies major while at Western.)

N	831
Same field	40%
Related field	30%
Different field	30%

B.2.c.3. Did you seek employment in your academic field? (Asked of respondents who indicated in B.2.c.2. that their current job is in a "related field" or "different field" from their major/ program at Western and were not a general studies major while at Western.)

N	533
Yes	68%
No	32%

Principal Activity: Employment (cont.)

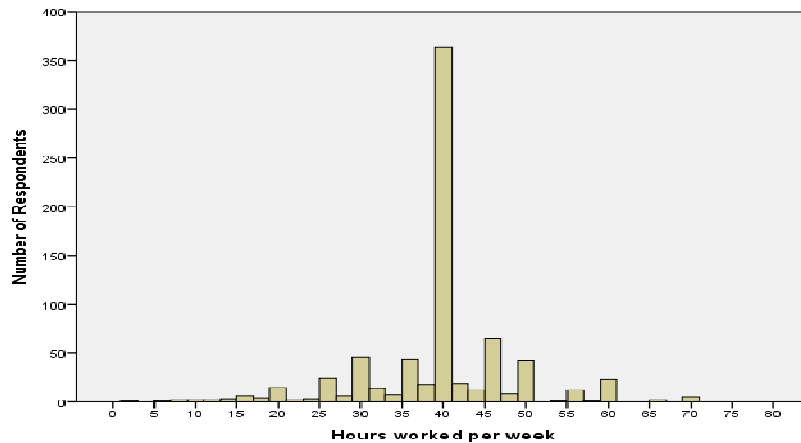
B.2.c.4. Why did you choose not to seek employment in your academic field? Choose all that apply.
(Asked of respondents who indicated in B.2.c.3. that they did not seek employment in their academic field.)

N	170
I did not feel adequately prepared	18%
There were no good-paying jobs in my field	23%
I did not know enough about the job market	23%
I was not interested in a career in my field	23%
I am planning to pursue further education	41%
My geographic preference limited my options	17%
Other, please specify below	25%

B.2.c.4.a. Other reason why I chose to not seek employment in my academic field (Open-ended question asked of respondents who indicated that they did not seek employment in their academic field.) (N=34)
(Text responses included: Entrepreneur pursued my own path and career goals; My professional field was not an academic option at Western; I was employed prior to attending western as a commercial fisherman. I simply continued that path.) (Text responses available on request.)

Principal Activity: Employment (cont.)

B.2.c.5. How many hours do you spend working for pay in a typical week? (Asked of respondents who indicated in B.2. that their current principal activity is employment full-time or employment part-time.) (OSR excluded cases reporting hours of 80 or greater, 1 case.)



N	Mean	Median	Minimum	Maximum	Standard Deviation
755	39.4	40	2	70	9

B.2.c.6. How well did your education at Western prepare you for success in the job market? (Asked of respondents who indicated in B.2. that their current principal activity is "employment, full-time paid", "employment, part-time paid" or indicated in B.2.b.6.a. that they have sought employment since graduating from Western or indicated in B.2.b.6. that they are currently employed.)

N	954
Not at all	6%
A little	12%
Somewhat	27%
Well	36%
Very well	19%

B.2.c.7. How valuable were the following in preparing you for your {current/primary} job? (Asked of respondents who indicated in B.2. that their current principal activity is "employment, full-time paid", "employment, part-time paid" and did not major in general studies while at Western.)

	N	Not at all valuable	A little valuable	Somewhat valuable	Valuable	Very valuable
Classes at Western in your major	737	4%	7%	16%	35%	39%
Classes at Western outside your major	734	8%	19%	36%	28%	9%
Other experiences at Western	734	4%	9%	22%	36%	29%

Principal Activity: Employment (cont.)

B.2.c.7.a. What other experiences at Western were valuable in preparing you for your {current/primary} job? (Open-ended question asked of respondents who indicated in or B.2.c.7. that their other experiences at Western were "very valuable.") (N=346) (Responses included: student employment/work study; volunteer work through service learning classes; work and cultural experiences in the AS; Being able to work and relate with different types of people; group work; participating in research lab; Being a member of Mecha and LSU.) (Text responses available on request.)

B.2.c.8. How satisfied are you with your {current/primary} job? (Asked of respondents who indicated in B.2. that their current principal activity is "employment, full-time paid" or "employment, part-time paid.")

N	744
Not at all satisfied	5%
A little satisfied	8%
Somewhat satisfied	21%
Satisfied	35%
Very satisfied	31%

B.2.c.9. How likely are you to stay in the same type of work for the next three years? (Asked of respondents who indicated in B.2. that their current principal activity is "employment, full-time paid" or "employment, part-time paid.")

N	746
Not at all likely	18%
A little likely	13%
Somewhat likely	16%
Likely	20%
Very likely	34%

Employment: Industry

B.2.c.10. In which industry/field is your {current/primary} job? (Asked of respondents who indicated in B.2. that their current principal activity is "employment, full-time paid" or "employment, part-time paid" or indicated in B.2.b.6. that they are currently employed.)

N	817
Accounting	3%
Agriculture/Natural Resources/Environment	3%
Arts/Design/Planning	6%
Communication	1%
Computer Science/Statistics	5%
Consulting	1%
Education/Teaching	16%
Engineering	5%
Financial Services	3%
Food service	5%
Government	2%
Health care	6%
Hospitality/Travel	2%
Law enforcement	0%
Legal	1%
Management/Administration	5%
Marketing/Sales	9%
Non-profit	5%
Politics	0%
Research	3%
Social Services	4%
Other, please specify below	17%

B.2.c.10.a. In which industry/field is your {current/primary} job? Other: (Open-ended question asked of respondents who indicated "other" in B.2.c.10.) (N=149) (Responses included: manufacturing; information technology; construction; public relations; marketing; youth ministry; retail; supply chain; human resources; veterinary field.) (Text responses available on request.)

Employment: Job Search

B.2.c.11. When were you offered the first career-oriented job you have held since graduation? (Asked of respondents who indicated in B.2. that their current principal activity is "employment, full-time paid" or "employment, part-time paid.")

N	748
While still attending Western	21%
Within three months after graduating from Western	25%
Three to six months after graduating from Western	19%
More than six months after graduating from Western	19%
I have not held a career-oriented job since graduation	16%

B.2.c.12. How did you learn about your {current/primary} job? (Asked of respondents who indicated in B.2. that their current principal activity is "employment, full-time paid" or "employment, part-time paid.")

N	741
Networking/personal contact/friend or family	28%
Online job sites	26%
Employer website	13%
Internship	8%
Previously employed there	7%
Western's Career Services Center (career fairs, Viking CareerLink, on-campus recruiting)	4%
Employment agency	3%
Faculty/Advisor	3%
Western major department	1%
Professional organization	1%
Newspaper	1%
Started a business	0%
Other, please specify below:	5%

B.2.c.12.a. How did you learn about your {current/primary} job? Other: (Open-ended question asked of respondents who indicated "other" in B.2.c.12.) (N=86) (Responses included: Craigslist; friend; LinkedIn; walked in and applied in person; Campus Point; family member; I was recruited.) (Text responses available on request.)

B.2.c.13. What is the name of your {current/primary} employer and what is your title? (Open-ended question asked of respondents who indicated in B.2. that their current principal activity is "employment, full-time paid" or "employment, part-time paid.") (N=697) (Text responses available on request.)

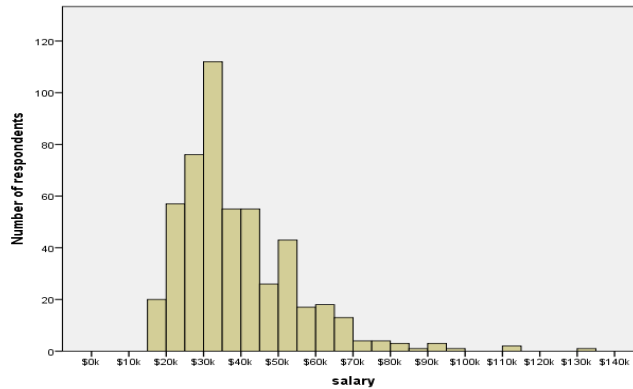
Employment: Job Details

B.2.c.14. Where is your {current/primary} job located? (Open-ended question asked of respondents who indicated in B.2. that their current principal activity is "employment, full-time paid" or "employment, part-time paid.")

N	713
Bellingham	21%
Seattle	18%
Other Washington Cities	42%
Other US Cities	9%
International	4%
Oregon	3%
California	3%

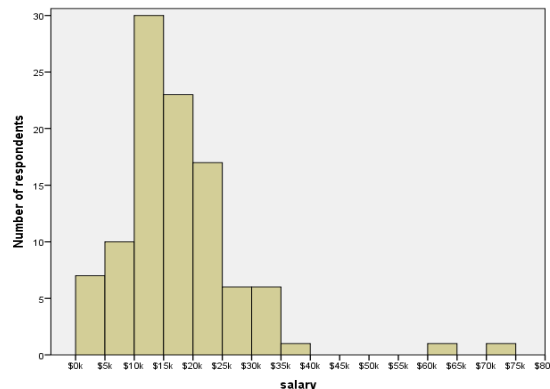
B.2.c.15. What is your pretax total annual salary? (Asked of respondents who indicated in B.2. that their current principal activity is "employment, full-time paid" or "employment, part-time paid".) (Respondents reporting more than one job were asked to include all jobs). (OSR excluded 46 cases where those employed full-time reported annual salaries of \$15k or lower, and where those employed full- or part-time reported annual salaries of \$200k or greater.)

B.2.c.15.a. Respondents employed full-time



N	Mean	Median	Minimum	Maximum	Standard Deviation
511	\$38,014	\$34,000	\$16,000	\$130,000	\$15,398

B.2.c.15.b. Respondents employed part-time



N	Mean	Median	Minimum	Maximum	Standard Deviation
102	\$16,577	\$15,000	\$0	\$70,000	\$10,096

Employment: Job Details

B.2.c.16. Does your compensation for your {current/primary} job include the following benefits? Check all that apply. (Asked of respondents who indicated in B.2. that their current principal activity is "employment, full-time paid" or "employment, part-time paid.")

N	726
Health insurance	69%
Dental insurance	58%
Retirement savings plan	57%
Other	17%
None	28%

B.2.c.16.a. What "other" benefits are included in compensation for your {current/primary} job? (Open-ended question asked of respondents who indicated in B.2.c.16. that their job compensation includes "other" benefits.) (N=103) (Responses included: gym membership; transportation compensation; life insurance; vision insurance; housing; paid time off/vacation/sick leave; bonuses; plane tickets; flex time; stock options; Costco membership; phone bill; free class each quarter; free food.) (Text responses available on request.)

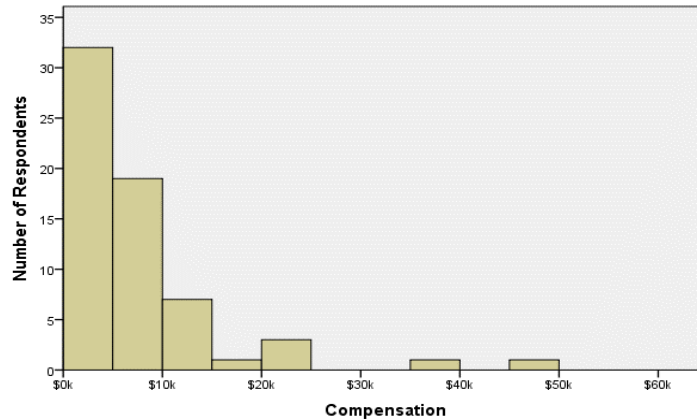
B.2.c.17. Were you offered any special compensation to entice you to accept this position? Check all that apply. (Asked of respondents who indicated in B.2. that their current principal activity is "employment, full-time paid" or "employment, part-time paid.")

N	717
Signing bonus	3%
Stock options	4%
Moving expenses	5%
Other	5%
None	87%

B.2.c.17.a. What "other" type of special compensation were you offered? (Open-ended question asked of respondents who indicated in B.2.c.17. that they were offered other special compensation.) (N=29) (Responses included: housing; education award and paid training; company car; bonuses; bus passes; per diem & travel expenses; paid vacation time; cell phone stipend; free meals at work; Studio time.) (Text responses available on request.)

Employment: Job Details

B.2.c.17.b. What is the approximate total value of the special compensation you were offered? (Asked of respondents who indicated in B.2.c.17. that they were offered one or more of the first four special compensation options.) (OSR excluded cases reporting compensation of \$75k or greater, 1 case.)



N	Mean	Median	Minimum	Maximum	Standard Deviation
64	\$6,013	\$4,900	\$0	\$45,000	\$7,840

B.2.c.18. Are you currently enrolled in an educational program? (Asked of respondents who indicated in B.2. that their current principal activity is something other than "graduate or professional school, full-time", "graduate or professional school, part-time" or "additional undergraduate course work.")

N	909
Yes	9%
No	91%

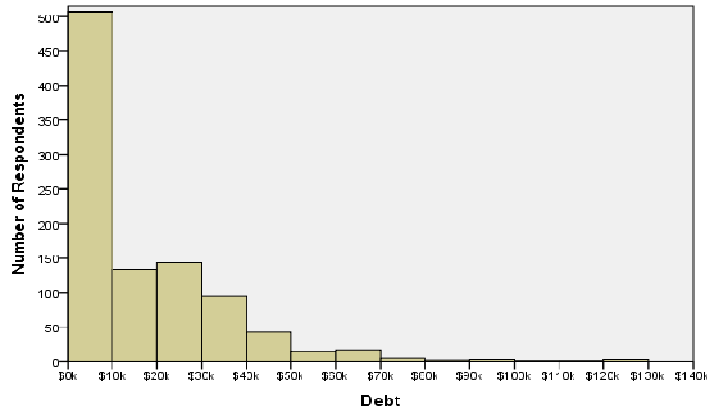
B.2.c.18.a. In which kind of program are you enrolled? (Asked of respondents who indicated in B.2.c.18. that they are currently enrolled in an educational program.)

N	77
Graduate or professional school, full-time	27%
Graduate or professional school, part-time	22%
Teaching certificate	5%
Other, please specify	46%

B.2.c.18.b. What are the names of the institution, degree and program in which you are enrolled? (Open-ended question asked of respondents who indicated in B.2.c.18. that they are currently enrolled in an educational program.) (N=75) (Text responses available on request.)

Educational Debt

B.3. How much is currently owed for your education? Include amounts borrowed through credit cards, student loans and other loans. (OSR excluded cases reporting debt of \$150k or greater, 1 case.)



N	Mean	Median	Minimum	Maximum	Standard Deviation
967	\$14,380	\$7,500	\$0	\$120,000	\$18,430

B.3.a. Has your educational debt impacted your decisions regarding the following? (Asked of respondents who indicated in B.3. that they have debt.)

	N	Yes	No
Job choices	559	61%	39%
Educational goals	559	68%	32%
Where you live	560	61%	39%

Demographics

B.4. What is your marital status?

N	998
Single	88%
Married or in a registered domestic partnership	11%
Divorced	1%
Widowed	

B.5. Where do you live (city)?

N	976
Bellingham	24%
Seattle	17%
Other Washington Cities	38%
Other US Cities	11%
International	4%
Oregon	3%
California	3%

C. College Level Responses

Satisfaction and Principal Activities

C.1. How satisfied are you with Western's contribution to your development in each of the following skills?
(Scale of 1-5, very dissatisfied to very satisfied.) (Means are reported.)

	CBE	Woodring	Fairhaven	CFPA	CHSS	Huxley	CST	WWU
N	174	110	44	73	437	77	167	1030
Writing skills	4.0	4.1	4.1	3.7	4.3	4.1	3.8	4.1
Oral communication skills	4.2	4.2	3.9	3.8	4.1	3.9	3.9	4.1
Critically evaluate information	4.3	4.4	4.3	4.2	4.3	4.3	4.4	4.3
Work or learn independently	4.2	4.3	4.2	4.3	4.3	4.3	4.4	4.3
Work cooperatively in a group	4.3	4.3	4.2	4.0	4.2	4.2	4.3	4.2
Appreciation of the arts	3.7	3.8	4.0	4.4	4.0	3.7	3.7	3.9
Apply scientific principles and methods	3.6	3.6	3.4	3.3	3.9	4.3	4.5	3.9
Apply quantitative principles and methods	4.0	3.6	3.5	3.5	3.9	4.2	4.5	3.9
Awareness of cultural and social differences among people	4.1	4.6	4.3	4.1	4.4	4.0	4.1	4.3
Use library resources for research	3.5	3.8	4.0	3.7	4.1	3.9	3.7	3.9
Work effectively with technology appropriate for your field	3.9	4.3	3.8	4.1	4.1	3.8	4.1	4.0

C.2. Which of the following best describes your current PRINCIPAL activity?

	CBE	Woodring	Fairhaven	CFPA	CHSS	Huxley	CST	WWU
N	188	83	45	74	456	79	179	1,083
Employment, full-time paid	75%	72%	51%	68%	55%	56%	62%	62%
Employment, part-time paid	8%	10%	22%	15%	17%	13%	6%	13%
Seeking employment	7%	5%	2%	7%	8%	14%	5%	7%
Graduate or professional school, full-time	6%	1%	4%	3%	9%	4%	16%	8%
Graduate or professional school, part-time			2%		0%	1%	1%	1%
Additional undergraduate coursework				1%	2%		2%	1%
Military service								
Volunteer activity (e.g. Peace Corps, Americorps)	1%	10%	9%	4%	4%	5%	2%	4%
Starting or raising a family	1%	1%			1%		1%	1%
Traveling	3%	1%	2%	1%	2%	4%	2%	2%
Other, please specify			7%	1%	3%	4%	4%	3%

Principal Activity: Education

Explanatory Note: Tables numbered C.2.b are primarily responses from alumni pursuing further education. Exceptions are noted.

C.2.b.1. When did you start this program? (Asked of respondents who did not major in General Studies and who indicated in C.2. that their current principal activity is education.)
(Respondents provided month and year, OSR calculated the time between degree completion and start date of new educational program).

	CBE	Woodring	Fairhaven	CFPA	CHSS	Huxley	CST	WWU
N	11	1	3	1	49	4	31	98
Prior to graduation	9%				4%		7%	5%
Less than 3 months after graduation	55%		67%		39%	100%	55%	48%
4-6 months after graduation	18%		33%		12%		7%	11%
7-9 months after graduation		100%		100%	14%		10%	12%
10-12 months after graduation	9%				8%		3%	5%
A year or more after graduation	9%				22%		19%	18%

C.2.b.2 How is this program related to your major at Western? (Asked respondents who did not major in General Studies and who indicated in C.2. that their current principal activity is education.)

	CBE	Woodring	Fairhaven	CFPA	CHSS	Huxley	CST	WWU
N	11	1	3	3	45	4	32	97
Same field	64%			67%	31%	25%	41%	37%
Related field	36%	100%	100%	33%	47%	50%	44%	46%
Different field					22%	25%	16%	17%

C.2.b.3. How well did your education at Western prepare you for success in your current educational program? (Asked of non general studies respondents who indicated in C.2. that their current principal activity is education.)

	CBE	Woodring	Fairhaven	CFPA	CHSS	Huxley	CST	WWU
N	11	1	3	3	49	4	32	101
Not at all								
A little					6%		3%	4%
Somewhat			33%		14%	25%	3%	10%
Well	73%		67%	33%	43%	50%	56%	50%
Very well	27%	100%		67%	37%	25%	38%	37%

Principal Activity: Education

C.2.b.4. How valuable were the following in preparing you for your current educational program? (Asked of respondents who indicated in C.2. that their current principal activity is education.) (Five-point scale of "not at all valuable" to "very valuable.") (Means are reported.)

	CBE	Woodring	Fairhaven	CFPA	CHSS	Huxley	CST	WWU
N	11	1	3	3	46	4	32	98
Classes in your major	4.7	5.0	4.3	4.7	4.2	4.5	4.4	4.4
Classes outside your major	3.5	3.0	4.0	2.7	3.3	3.3	3.0	3.2
Other experiences at Western	4.2	4.0	3.7	3.3	4.0	3.3	3.6	3.9

C.2.b.5 Are you currently employed? (Asked of respondents who indicated in C.2. that their current principal activity is education, raising a family, or traveling.)

	CBE	Woodring	Fairhaven	CFPA	CHSS	Huxley	CST	WWU
N	18	3	7	4	72	10	42	150
Yes	33%	33%	71%	50%	54%	40%	60%	54%
No	67%	67%	29%	50%	46%	60%	41%	46%

C.2.b.5.a. Since graduating from Western, have you sought employment? (asked of respondents who indicated in C.2.b.5. that they are not currently employed.)

	CBE	Woodring	Fairhaven	CFPA	CHSS	Huxley	CST	WWU
N	12	2	2	2	33	6	17	69
Yes	58%	100%	50%	50%	61%	67%	35%	54%
No	42%		50%	50%	39%	33%	65%	46%

C.2.b.5.b. Is your current job full or part-time? (Asked of respondents who indicated in C.2.b.5. that they are currently employed.)

	CBE	Woodring	Fairhaven	CFPA	CHSS	Huxley	CST	WWU
N	6	1	5	2	39	4	25	81
Full-time	33%		20%	50%	23%	100%	48%	37%
Part-time	67%	100%	80%	50%	77%		52%	63%

Principal Activity: Education

C.2.b.6 How closely is your {current/primary} job related to your major program at WWU? (Asked of respondents who indicated that they are currently employed in C.2.c., and were not a general studies major while at Western.)

	CBE	Woodring	Fairhaven	CFPA	CHSS	Huxley	CST	WWU
N	6	2	5	2	36	4	25	78
Same field	50%	100%	20%		25%	50%	36%	32%
Related field	17%		20%	100%	31%	25%	36%	32%
Different field	33%		60%		44%	25%	28%	36%

C.2.b.6.a. Did you seek employment in your academic field? (Asked of respondents who indicated in in C.2.b.2. that their current job is in a "related field" or "different field" from their major/ program at Western and did not major in general studies while at Western.)

	CBE	Woodring	Fairhaven	CFPA	CHSS	Huxley	CST	WWU
N	10	2	5	3	46	6	22	89
Yes	60%	100%	60%	67%	52%	83%	73%	62%
No	40%		40%	33%	48%	17%	27%	38%

Principal Activity:Employment

Explanatory Note:Explanatory Note: Tables numbered C.2.c are primarily responses from alumni pursuing employment. Exceptions are noted.

C.2.c.1. Do you have more than one job? (Asked of respondents who indicated in C.2 that their principal activity is full or part-time employment).

	CBE	Woodring	Fairhaven	CFPA	CHSS	Huxley	CST	WWU
N	145	91	32	59	307	52	108	755
Yes	12%	19%	19%	24%	22%	21%	11%	17%
No	88%	81%	81%	76%	78%	79%	89%	83%

Explanatory Note: Respondents who indicated in C.2.c.1 that they had more than one job were asked in subsequent questions to respond regarding their 'primary' job. Conversely, respondents indicating in B.2.c.1 that they had only one job were asked about their 'current' job.

C.2.c.2 How closely is your {current/primary} job related to your major at WWU? (Asked of respondents who indicated in C.2. that their current principal activity is "employment, full-time paid", "employment, part-time paid".)

	CBE	Woodring	Fairhaven	CFPA	CHSS	Huxley	CST	WWU
N	153	67	37	61	334	57	136	831
Same field	51%	66%	35%	66%	21%	35%	52%	40%
Related field	30%	18%	22%	12%	36%	33%	29%	30%
Different field	19%	16%	43%	23%	44%	32%	18%	30%

C.2.c.2.a. Did you seek employment in your academic field? (Asked of respondents who indicated in C.2.c.2. that their {current/primary} job is in a "related field" or "different field" from their major/ program at Western and did not major in general studies while at Western.)

	CBE	Woodring	Fairhaven	CFPA	CHSS	Huxley	CST	WWU
N	82	25	25	22	284	41	71	533
Yes	72%	80%	68%	46%	63%	88%	75%	68%
No	28%	20%	32%	55%	37%	12%	25%	32%

Principal Activity:Employment

C.2.c.2.a.1. Why did you choose not to seek employment in your academic field? Choose all that apply. (Asked of respondents who indicated in C.2.c.2.a. that they did not seek employment in their academic field.)

	CBE	Woodring	Fairhaven	CFPA	CHSS	Huxley	CST	WWU
N	23	4	8	12	104	5	18	170
I did not feel adequately prepared	17%		38%	25%	16%		22%	18%
There were no good-paying jobs in my field	13%	25%	38%	50%	27%			23%
I did not know enough about the job market	9%		50%	17%	26%	20%	17%	23%
I was not interested in a career in my field	22%	25%		33%	20%	60%	28%	23%
I am planning to pursue further education	13%		50%	33%	46%	40%	61%	41%
My geographic preference limited my options	9%		25%	8%	16%	40%	22%	17%
Other, please specify below	44%	50%	13%	25%	21%	20%	22%	25%

C.2.c.3. How many hours do you spend working for pay in a typical week?(Asked of respondents who indicated in C.2 that their principal activity is full or part-time employment).

	CBE	Woodring	Fairhaven	CFPA	CHSS	Huxley	CST	WWU
N	108	64	32	51	316	51	107	755
Mean	44	40	34	39	38	39	42	39

C.2.c.4. How well did your education at Western prepare you for success in the job market? (Asked of respondents who indicated in C.2. that their current principal activity is "employment, full-time paid", "employment, part-time paid", or indicated in C.2.b.5.a. that they have sought employment since graduating from Western or indicated in C.2.b.5. that they are currently employed.)

	CBE	Woodring	Fairhaven	CFPA	CHSS	Huxley	CST	WWU
N	170	73	39	67	401	71	151	954
Not at all	4%	4%	8%	3%	7%	10%	4%	6%
A little	13%	7%	13%	5%	16%	9%	11%	12%
Somewhat	24%	15%	31%	27%	31%	31%	27%	27%
Well	39%	33%	39%	33%	34%	38%	38%	36%
Very well	21%	41%	10%	33%	13%	13%	21%	19%

Principal Activity:Employment

C.2.c.5. How valuable were the following in preparing you for your{current/primary} job? (Asked of respondents who indicated in C.2. that their current principal activity is "employment, full-time paid", "employment, part-time paid" and did not major in general studies while at Western.) (Four-point scale of "not at all valuable" to "very valuable.") (Means are reported.)

	CBE	Woodring	Fairhaven	CFPA	CHSS	Huxley	CST	WWU
N	144	92	32	58	291	52	107	737
Classes at Western in your major	4.1	4.4	3.8	4.5	3.7	3.8	4.2	4.0
Classes at Western outside your major	3.2	3.3	3.2	3.1	3.2	3.2	2.8	3.1
Other experiences at Western	3.9	3.8	3.9	3.6	3.9	3.6	3.6	3.8

C.2.c.6. How satisfied are you with your {current/primary} job? (Asked of respondents who indicated in C.2. that their current principal activity is "employment, full-time paid" or "employment, part-time paid.")

	CBE	Woodring	Fairhaven	CFPA	CHSS	Huxley	CST	WWU
N	143	92	31	57	303	51	106	744
Not at all satisfied	4%	2%	7%	4%	6%	4%	5%	5%
A little satisfied	8%	2%	16%	9%	10%	8%	6%	8%
Somewhat satisfied	19%	20%	10%	16%	27%	22%	15%	21%
Satisfied	32%	36%	32%	26%	35%	45%	39%	35%
Very satisfied	39%	40%	36%	46%	22%	22%	36%	31%

C.2.c.7. How likely are you to stay in the same type of work for the next three years? (Asked of respondents who indicated in C.2. that their current principal activity is "employment, full-time paid" or "employment, part-time paid.")

	CBE	Woodring	Fairhaven	CFPA	CHSS	Huxley	CST	WWU
N	143	92	31	57	303	52	107	746
Not at all likely	10%	11%	29%	7%	28%	23%	11%	18%
A little likely	11%	7%	23%	5%	16%	14%	9%	13%
Somewhat likely	15%	11%	10%	12%	18%	12%	16%	16%
Likely	31%	11%	7%	23%	18%	25%	15%	20%
Very likely	34%	61%	32%	53%	20%	27%	49%	34%

Employment: Industry

C.2.c.8. In which industry/field is your {current/primary} job? (Asked of respondents who indicated in C.2. that their current principal activity is "employment, full-time paid" or "employment, part-time paid," or indicated in C.2.b.6 that they are currently employed.)

	CBE	Woodring	Fairhaven	CFPA	CHSS	Huxley	CST	WWU
N	145	66	36	60	338	55	131	817
Accounting	12%				1%			3%
Agriculture/Natural Resources/Environment	1%				1%	26%	6%	3%
Arts/Design/Planning	2%		8%	58%	1%	4%	2%	6%
Communication	1%			3%	3%			1%
Computer Science/Statistics	8%		3%	2%	2%		15%	5%
Consulting	1%				1%	4%	2%	1%
Education/Teaching	3%	38%	14%	10%	18%	13%	12%	16%
Engineering	1%		3%		0%		27%	5%
Financial Services	10%			2%	2%		2%	3%
Food Service	1%		3%	3%	9%	6%	2%	5%
Government	3%	5%	3%		1%	13%	1%	2%
Health care	1%	8%	3%		10%	2%	3%	6%
Hospitality/Travel	1%	3%			2%			2%
Law enforcement		2%						0%
Legal	1%		6%		2%			1%
Management/Administration	10%	2%	3%	5%	5%	4%	1%	5%
Marketing/Sales	17%	3%	8%	8%	10%	2%	4%	9%
Non-profit	1%	20%	11%	3%	6%	2%	1%	5%
Politics	1%				1%			0%
Research	1%				3%	2%	11%	3%
Social Services		14%	14%		5%		2%	4%
Other, please specify below	26%	8%	16%	5%	19%	26%	11%	17%

Employment: Job Search

C.2.c.9. When were you offered the first career-oriented job you have held since graduation? (Asked of respondents who indicated in C.2. that their current principal activity is "employment, full-time paid" or "employment, part-time paid.")

	CBE	Woodring	Fairhaven	CFPA	CHSS	Huxley	CST	WWU
N	143	65	31	57	305	52	107	748
While still attending Western	36%	20%	16%	21%	13%	27%	22%	21%
Within three months after graduating from Western	29%	42%	23%	30%	23%	8%	23%	25%
Three to six months after graduating from Western	13%	15%	16%	18%	21%	14%	26%	19%
More than six months after graduating from Western	15%	14%	23%	19%	19%	31%	20%	19%
I have not held a career-oriented job since graduation	8%	9%	23%	12%	23%	21%	9%	16%

C.2.c.10. How did you learn about your { current/primary } job? (Asked of respondents who indicated in C.2. that their current principal activity is "employment, full-time paid" or "employment, part-time paid.")

	CBE	Woodring	Fairhaven	CFPA	CHSS	Huxley	CST	WWU
N	141	65	31	57	301	51	107	741
Newspaper					1%	4%		1%
Online job sites	26%	23%	26%	26%	30%	28%	21%	26%
Employer website	8%	23%	7%	11%	11%	12%	18%	13%
Previously employed there	6%	8%	13%	2%	7%	10%	5%	7%
Internship	9%	14%	13%	5%	5%	12%	11%	8%
Networking/personal contact/family or friend	31%	28%	39%	32%	28%	20%	26%	28%
Employment agency	4%			12%	3%		3%	3%
Faculty/Advisor	2%			4%	2%	8%	7%	3%
Western major department	1%	2%		2%	1%	2%	2%	1%
Western's Career Services Center (career fairs, Viking CareerLink, on-campus recruiting)	7%	2%		2%	3%	4%	4%	4%
Professional organization	2%	2%			1%		1%	1%
Started a business	1%				0%			0%
Other, please specify below:	3%		3%	5%	8%	2%	4%	5%

Employment: Job Details

C.2.c.11. Where is your {current/primary} job located? (Open-ended question asked of respondents who indicated in C.2. that their current principal activity is "employment, full-time paid" or "employment, part-time paid.")

	CBE	Woodring	Fairhaven	CFPA	CHSS	Huxley	CST	WWU
N	138	61	28	47	295	51	102	713
Bellingham	22%	21%	32%	32%	19%	22%	19%	21%
Seattle	20%	11%	21%	19%	20%	16%	13%	18%
Other Washington Cities	40%	49%	25%	40%	42%	41%	46%	42%
Other US Cities	7%	7%	14%	6%	8%	16%	13%	9%
International	6%	3%	4%		5%		2%	4%
Oregon	1%	7%		2%	3%	2%	7%	3%
California	6%	2%	4%		3%	4%	1%	3%

C.2.c.12. What is your total pre-tax annual salary? OR Including all your jobs, what is your pre-tax annual salary? (Asked of respondents who indicated in C.2. that their current principal activity is "employment, full-time paid.") (Respondents reporting more than one job were asked to include all jobs). (OSR excluded 46 cases where those employed full-time reported annual salaries of \$15k or lower, and where those employed full- or part-time reported annual salaries of \$200k or greater.)

	CBE	Woodring	Fairhaven	CFPA	CHSS	Huxley	CST	WWU
N	115	46	17	38	180	34	88	511
Mean	\$42,847	\$31,809	\$33,944	\$40,526	\$31,266	\$34,622	\$48,942	\$38,014

C.2.c.13. Does your compensation for this job include the following benefits? Check all that apply. (Asked of respondents who indicated in C.2. that their current principal activity is "employment, full-time paid" or "employment, part-time paid.")

	CBE	Woodring	Fairhaven	CFPA	CHSS	Huxley	CST	WWU
N	140	62	31	56	293	50	106	726
Health insurance	81%	76%	61%	75%	60%	64%	74%	69%
Dental insurance	71%	71%	55%	55%	46%	50%	70%	58%
Retirement savings plan	71%	65%	45%	54%	44%	50%	71%	57%
Other	23%	11%	16%	21%	14%	12%	22%	17%
None	18%	21%	36%	23%	37%	32%	23%	28%

Employment: Job Details

C.2.c.14. Were you offered any special compensation to entice you to accept this position? Check all that apply. (Asked of respondents who indicated in C.2. that their current principal activity is "employment, full-time paid" or "employment, part-time paid.")

	CBE	Woodring	Fairhaven	CFPA	CHSS	Huxley	CST	WWU
N	137	60	31	56	291	50	104	717
Signing bonus	6%	2%					9%	3%
Stock options	7%	2%		5%	3%	2%	6%	4%
Moving expenses	7%			2%	2%		15%	5%
Other	7%	3%		9%	6%	4%	5%	5%
None	82%	93%	100%	86%	90%	94%	76%	87%

C.2.c.14.a. What is the approximate total value of the special compensation you were offered? (Asked of respondents who indicated in C.2.c.14. that they were offered one of the first four special compensation options.) (OSR limited responses to values of \$50,000 or less.)

	CBE	Woodring	Fairhaven	CFPA	CHSS	Huxley	CST	WWU
N	20	4		3	21	3	16	64
Mean	\$8,760	\$3,756		\$2,893	\$5,138	\$5,000	\$5,938	\$6,013

Principal Activity:Employment

C.2.c.15. Are you currently enrolled in an educational program? (Asked of respondents who indicated in C.2. that their current principal activity is something other than "graduate or professional school, full-time", "graduate or professional school, part-time "or "additional undergraduate course work.")

	CBE	Woodring	Fairhaven	CFPA	CHSS	Huxley	CST	WWU
N	162	80	40	59	384	72	132	909
Yes	8%	10%	18%	3%	10%	1%	8%	9%
No	92%	90%	83%	97%	90%	99%	92%	91%

C.2.c.15.a. In which kind of program are you enrolled? (Asked of respondents who indicated in C.2.c.15. that they are currently enrolled in an educational program.)

	CBE	Woodring	Fairhaven	CFPA	CHSS	Huxley	CST	WWU
N	13	7	7	2	37	1	11	77
Graduate or Professional School, full-time	15%	14%	29%		30%	100%	36%	27%
Graduate or Professional School, part-time	8%	29%	29%	50%	14%		36%	22%
Teaching certificate		14%			8%			5%
Other, please specify below	77%	43%	43%	50%	49%		27%	46%

Educational Debt

C.3. How much is currently owed for your education? Include amounts borrowed through credit cards, student loans and other loans.

	CBE	Woodring	Fairhaven	CFPA	CHSS	Huxley	CST	WWU
N	164	106	41	66	404	76	161	967
Mean	\$12,575	\$20,188	\$19,352	\$13,973	\$13,349	\$12,022	\$15,087	\$14,380

C.3.a. Has your educational debt impacted your decisions regarding the following? (Asked of respondents who indicated in C.3. that they have debt.)

	CBE	Woodring	Fairhaven	CFPA	CHSS	Huxley	CST	WWU
N	90	49	31	38	235	38	92	559
Job choices								
Yes	53%	59%	58%	74%	72%	53%	41%	61%
No	47%	41%	42%	26%	28%	47%	59%	39%
Educational goals								
Yes	62%	78%	55%	65%	78%	71%	46%	68%
No	39%	22%	45%	35%	22%	29%	54%	32%
Where you live								
Yes	54%	76%	61%	73%	66%	55%	44%	61%
No	46%	24%	39%	27%	35%	45%	57%	39%

Demographics

C.4. What is your marital status?

	CBE	Woodring	Fairhaven	CFPA	CHSS	Huxley	CST	WWU
N	171	80	43	70	419	76	163	998
Single	86%	78%	93%	91%	91%	91%	85%	88%
Married or in a registered domestic partnership	14%	19%	7%	7%	9%	8%	15%	11%
Divorced		4%		1%	0%	1%		1%
Widowed								

C.5. Where do you live (city)?

	CBE	Woodring	Fairhaven	CFPA	CHSS	Huxley	CST	WWU
N	167	74	42	59	415	75	161	976
Bellingham	25%	27%	29%	31%	24%	27%	20%	24%
Seattle	20%	11%	17%	22%	17%	15%	16%	17%
Other Washington Cities	34%	43%	24%	39%	37%	41%	40%	38%
Other US Cities	10%	7%	17%	5%	11%	13%	14%	11%
International	6%	4%	2%		6%		3%	4%
Oregon	1%	5%		2%	4%	1%	6%	3%
California	4%	3%	12%	2%	2%	3%	2%	3%

D. College of Business and Economics

Satisfaction and Principal Activities

D.1. How satisfied are you with Western's contribution to your development in each of the following skills? (Scale of 1-5, very dissatisfied to very satisfied.) (Means are reported.)

	ACCT	DSCI	ECON	FMKT	MGMT	CBE	WWU
N	23	32	44	45	37	174	1030
Writing skills	4.1	4.2	4.0	4.0	3.8	4.0	4.1
Oral communication skills	4.3	4.5	3.8	4.1	4.3	4.2	4.1
Critically evaluate information	4.3	4.3	4.5	4.0	4.2	4.3	4.3
Work or learn independently	4.4	4.4	4.4	3.9	4.3	4.2	4.3
Work cooperatively in a group	4.6	4.5	4.0	4.3	4.6	4.3	4.2
Appreciation of the arts	3.9	3.8	3.5	3.6	3.6	3.7	3.9
Apply scientific principles and methods	3.9	4.0	3.8	3.4	3.2	3.6	3.9
Apply quantitative principles and methods	4.4	4.2	4.1	3.8	3.6	4.0	3.9
Awareness of cultural and social differences among people	4.2	4.4	3.9	4.0	4.0	4.1	4.3
Use library resources for research	3.7	3.6	3.5	3.5	3.2	3.5	3.9
Work effectively with technology appropriate for your field	4.0	4.3	3.8	3.8	4.0	3.9	4.0

D.2. Which of the following best describes your current PRINCIPAL activity?

	ACCT	DSCI	ECON	FMKT	MGMT	CBE	WWU
N	24	35	46	50	40	188	1,083
Employment, full-time paid	58%	91%	65%	82%	73%	75%	62%
Employment, part-time paid	17%	6%	2%	8%	13%	8%	13%
Seeking employment		3%	11%	10%	5%	7%	7%
Graduate or professional school, full-time	17%		11%		8%	6%	8%
Graduate or professional school, part-time							1%
Additional undergraduate coursework							1%
Military service							
Volunteer activity (e.g. Peace Corps, Americorps)			2%			1%	4%
Starting or raising a family	8%					1%	1%
Traveling			9%		3%	3%	2%
Other, please specify							3%

Principal Activity: Employment

D.2.a. Do you have more than one job? (Asked of respondents who indicated in D.2 that their principal activity is full or part-time employment).

	ACCT	DSCI	ECON	FMKT	MGMT	CBE	WWU
N	18	32	30	40	32	145	755
Yes	17%	6%	10%	13%	16%	12%	17%
No	83%	94%	90%	88%	84%	88%	83%

D.2.b. How closely is your {current/primary} job related to your major at WWU? (Asked of respondents who indicated in D.2 that their current principal activity is employment, and were not a general studies major while at Western.)

	ACCT	DSCI	ECON	FMKT	MGMT	CBE	WWU
N	20	32	34	41	33	153	831
Same field	70%	75%	38%	44%	46%	51%	40%
Related field	20%	19%	27%	37%	39%	30%	30%
Different field	10%	6%	35%	20%	15%	19%	30%

D.2.b.1. Did you seek employment in your academic field? (Asked of respondents who indicated that they have sought employment since graduating from Western, or indicated in D.2.b. that their current job is in a "related field" or "different field" from their major/ program at Western and did not major in general studies while at Western.)

	ACCT	DSCI	ECON	FMKT	MGMT	CBE	WWU
N	9	8	23	23	20	82	533
Yes	67%	100%	48%	87%	75%	72%	68%
No	33%		52%	13%	25%	28%	32%

D.2.c. How well did your education at Western prepare you for success in the job market? (Asked of respondents who indicated in D.2. that their current principal activity is "employment, full-time paid", "employment, part-time paid" or indicated in B.2.b.6.a. that they have sought employment since graduating from Western or indicated in B.2.b.6. that they are currently employed.)

	ACCT	DSCI	ECON	FMKT	MGMT	CBE	WWU
N	23	33	40	45	36	170	954
Not at all			5%	11%		4%	6%
A little	4%	3%	18%	16%	17%	13%	12%
Somewhat	22%	15%	35%	18%	22%	24%	27%
Well	39%	33%	35%	47%	39%	39%	36%
Very well	35%	49%	8%	9%	22%	21%	19%

Employment and Education (cont.)

D.2.d. How valuable were the following in preparing you for your{current/primary} job? (Asked of respondents who indicated in D.2. that their current principal activity is "employment, full-time paid", "employment, part-time paid" and did not major in general studies while at Western.) (Five-point scale of "not at all valuable" to "very valuable.") (Means are reported.)

	ACCT	DSCI	ECON	FMKT	MGMT	CBE	WWU
N	18	32	30	39	32	144	737
Classes at Western in your major	4.4	4.3	3.9	3.9	4.3	4.1	4.0
Classes at Western outside your major	3.1	3.2	3.0	3.2	3.3	3.2	3.1
Other experiences at Western	4.0	4.1	3.7	3.8	4.0	3.9	3.8

D.2.e. How satisfied are you with your {current/primary} job? (Asked of respondents who indicated in D.2. that their current principal activity is "employment, full-time paid" or "employment, part-time paid.")

	ACCT	DSCI	ECON	FMKT	MGMT	CBE	WWU
N	18	32	30	38	32	143	744
Not at all satisfied		3%	3%	8%		4%	5%
A little satisfied	6%		13%	8%	9%	8%	8%
Somewhat satisfied	22%	9%	27%	21%	16%	19%	21%
Satisfied	33%	38%	30%	26%	34%	32%	35%
Very satisfied	39%	50%	27%	37%	41%	39%	31%

D.2.f. How likely are you to stay in the same type of work for the next three years? (Asked of respondents who indicated in D.2. that their current principal activity is "employment, full-time paid" or "employment, part-time paid.")

	ACCT	DSCI	ECON	FMKT	MGMT	CBE	WWU
N	18	32	30	38	32	143	730
Not at all likely			20%	16%	6%	10%	19%
A little likely		13%	7%	16%	9%	11%	13%
Somewhat likely	11%	13%	13%	21%	16%	15%	16%
Likely	50%	25%	33%	24%	34%	31%	20%
Very likely	39%	50%	27%	24%	34%	34%	33%

Employment: Industry

D.2.g. In which industry/field is your {current/primary} job? (Asked of respondents who indicated in D.2. that their current principal activity is "employment, full-time paid" or "employment, part-time paid" or indicated in B.2.b.6. that they are currently employed.)

	ACCT	DSCI	ECON	FMKT	MGMT	CBE	WWU
N	20	30	34	39	29	145	817
Accounting	65%	10%	9%	8%	3%	12%	3%
Agriculture/Natural Resources/Environment			3%			1%	3%
Arts/Design/Planning			3%	3%	3%	2%	6%
Communication				3%		1%	1%
Computer Science/Statistics	5%	30%		3%	3%	8%	5%
Consulting			3%			1%	1%
Education/Teaching			12%			3%	16%
Engineering		3%	3%			1%	5%
Financial Services	5%		12%	21%	7%	10%	3%
Food service			3%			1%	5%
Government	5%		6%		3%	3%	2%
Health care		3%	3%			1%	6%
Hospitality/Travel					3%	1%	2%
Law enforcement							0%
Legal			3%			1%	1%
Management/Administration		7%	3%	8%	31%	10%	5%
Marketing/Sales	5%		9%	41%	17%	17%	9%
Non-profit			3%			1%	5%
Politics			3%			1%	0%
Research				3%		1%	3%
Social Services							4%
Other, please specify below	15%	47%	24%	13%	28%	26%	17%

Employment: Job Search

D.2.h. When were you offered the first career-oriented job you have held since graduation? (Asked of respondents who indicated in D.2. that their current principal activity is "employment, full-time paid" or "employment, part-time paid.")

	ACCT	DSCI	ECON	FMKT	MGMT	CBE	WWU
N	18	32	30	38	32	143	748
While still attending Western	50%	63%	13%	29%	38%	36%	21%
Within three months after graduating from Western	22%	22%	37%	24%	34%	29%	25%
Three to six months after graduating from Western	11%	6%	17%	21%	9%	13%	19%
More than six months after graduating from Western	17%	6%	13%	21%	13%	15%	19%
I have not held a career-oriented job since graduation		3%	20%	5%	6%	8%	16%

D.2.i. How did you learn about your {current/primary} job? (Asked of respondents who indicated in D.2. that their current principal activity is "employment, full-time paid" or "employment, part-time paid.")

	ACCT	DSCI	ECON	FMKT	MGMT	CBE	WWU
N	18	32	29	37	32	141	741
Newspaper							1%
Online job sites	44%	16%	28%	32%	22%	26%	26%
Employer website	11%	3%		11%	13%	8%	13%
Previously employed there	6%		3%	5%	13%	6%	7%
Internship		22%	3%	5%	6%	9%	8%
Networking/personal contact/friend or family	17%	19%	48%	27%	34%	31%	28%
Employment agency			10%	5%	3%	4%	3%
Faculty/Advisor		6%	3%			2%	3%
Western major department		6%				1%	1%
Western's Career Services Center (career fairs, Viking CareerLink, on-campus recruiting)	17%	22%	3%	3%		7%	4%
Professional organization	6%			5%	3%	2%	1%
Started a business				3%	3%	1%	0%
Other, please specify below:		6%		3%	3%	3%	5%

Employment: Job Details

D.2.j. What is your total pre-tax annual salary? OR Including all your jobs, what is your pre-tax annual salary? (Asked of respondents who indicated in D.2. that their current principal activity is "employment, full-time paid".) (Respondents reporting more than one job were asked to include all jobs). (OSR excluded cases where those employed full-time reported annual salaries of \$15k or lower, and where those employed full- or part-time reported annual salaries of \$200k or greater.)

	ACCT	DSCI	ECON	FMKT	MGMT	CBE	WWU
N	12	29	21	34	24	115	511
Mean	\$40,422	\$54,405	\$42,585	\$36,784	\$39,612	\$42,847	\$38,014

D.2.k. Does your compensation for this job include the following benefits? Check all that apply. (Asked of respondents who indicated in D.2. that their current principal activity is "employment, full-time paid" or "employment, part-time paid.")

	ACCT	DSCI	ECON	FMKT	MGMT	CBE	WWU
N	17	31	29	38	31	140	726
Health insurance	82%	97%	69%	76%	84%	81%	69%
Dental insurance	77%	90%	59%	66%	71%	71%	58%
Retirement savings plan	71%	94%	59%	71%	68%	71%	57%
Other	35%	42%	17%	16%	19%	23%	17%
None	18%	3%	28%	21%	16%	18%	28%

D.2.l. Were you offered any special compensation to entice you to accept this position? Check all that apply. (Asked of respondents who indicated in D.2. that their current principal activity is "employment, full-time paid" or "employment, part-time paid.")

	ACCT	DSCI	ECON	FMKT	MGMT	CBE	WWU
N	16	30	29	37	31	137	717
Signing bonus		10%	7%	5%	3%	6%	3%
Stock options		17%		3%	10%	7%	4%
Moving expenses		10%	7%	3%	10%	7%	5%
Other		13%	10%	3%	7%	7%	5%
None	100%	60%	86%	89%	84%	82%	87%

Educational Debt

D.3. How much is currently owed for your education? Include amounts borrowed through credit cards, student loans and other loans.

	ACCT	DSCI	ECON	FMKT	MGMT	CBE	WWU
N	22	29	44	40	35	164	967
Mean	\$14,477	\$13,345	\$10,163	\$12,488	\$14,404	\$12,575	\$14,380

D.3.a. Has your educational debt impacted your decisions regarding the following? (Asked of respondents who indicated in D.3. that they have debt.)

	ACCT	DSCI	ECON	FMKT	MGMT	CBE	WWU
N	14	14	25	20	22	90	559
Job choices							
Yes	50%	71%	52%	60%	41%	53%	61%
No	50%	29%	48%	40%	59%	47%	39%
Educational goals							
Yes	64%	87%	64%	60%	46%	62%	68%
No	36%	13%	36%	40%	55%	39%	32%
Where you live							
Yes	36%	60%	48%	65%	55%	54%	61%
No	64%	40%	52%	35%	46%	46%	39%

E. Woodring College

Satisfaction and Principal Activities

E.1. How satisfied are you with Western's contribution to your development in each of the following skills? (Scale of 1-5, very dissatisfied to very satisfied.) (Means are reported.)

	HSR	SEC	SPED	ELED TEOP	ELED BHAM	Woodring	WWU
N	51	15	14	8	22	110	1030
Writing skills	4.3	3.9	3.6	4.1	4.0	4.1	4.1
Oral communication skills	4.3	4.2	4.0	4.5	4.1	4.2	4.1
Critically evaluate information	4.4	4.6	4.1	4.1	4.2	4.3	4.3
Work or learn independently	4.4	4.2	4.1	4.4	4.3	4.3	4.3
Work cooperatively in a group	4.4	4.2	4.1	4.4	4.3	4.3	4.2
Appreciation of the arts	3.9	4.1	3.1	4.0	3.8	3.8	3.9
Apply scientific principles and methods	3.5	4.0	3.4	4.0	3.9	3.7	3.9
Apply quantitative principles and methods	3.6	3.9	3.5	4.1	3.8	3.7	3.9
Awareness of cultural and social differences among people	4.8	4.3	4.2	4.4	4.4	4.5	4.3
Use library resources for research	3.9	3.6	3.4	3.8	3.7	3.8	3.9
Work effectively with technology appropriate for your field	4.4	4.0	3.9	4.0	4.0	4.2	4.0

E.2. Which of the following best describes your current PRINCIPAL activity?

	HSR	SEC	SPED	ELED TEOP	ELED BHAM	Woodring	WWU
N	52	15	16	8	23	114	1,083
Employment, full-time paid	71%	60%	88%	75%	70%	72%	62%
Employment, part-time paid	10%	13%	6%	13%	22%	12%	13%
Seeking employment	6%	7%		13%		4%	7%
Graduate or professional school, full-time			6%			1%	8%
Graduate or professional school, part-time							1%
Additional undergraduate coursework							1%
Military service							
Volunteer activity (e.g. Peace Corps, Americorps)	14%	7%			4%	8%	4%
Starting or raising a family		7%				1%	1%
Traveling		7%				1%	2%
Other, please specify					4%	1%	3%

Principal Activity: Employment

E.2.a. Do you have more than one job? (Asked of respondents who indicated in E.2 that their principal activity is full or part-time employment).

	HSR	SEC	SPED	ELED TEOP	ELED BHAM	Woodring	WWU
N	40	11	13	7	20	91	755
Yes	10%	46%	23%		25%	19%	17%
No	90%	55%	77%	100%	75%	81%	83%

E.2.b. How closely is your {current/primary} job related to your major at WWU? (Asked of respondents who indicated in E.2. that their current principal activity is "employment, full-time paid", "employment, part-time paid".)

	HSR	SEC	SPED	ELED TEOP	ELED BHAM	Woodring	WWU
N	42	11	14	7	21	95	831
Same field	57%	64%	93%	86%	86%	72%	40%
Related field	24%	18%		14%	14%	17%	30%
Different field	19%	18%	7%			12%	30%

E.2.b.1. Did you seek employment in your academic field? (Asked of respondents who indicated that they have sought employment since graduating from Western, or indicated in E.2.b. that their current job is in a "related field" or "different field" from their major/ program at Western and did not major in general studies while at Western.)

	HSR	SEC	SPED	ELED TEOP	ELED BHAM	Woodring	WWU
N	18	6	1	1	3	29	533
Yes	72%	100%	100%	100%	100%	83%	68%
No	28%					17%	32%

E.2.c. How well did your education at Western prepare you for success in the job market? (Asked of respondents who indicated in E.2. that their current principal activity is "employment, full-time paid", "employment, part-time paid" or indicated in B.2.b.6.a. that they have sought employment since graduating from Western or indicated in B.2.b.6. that they are currently employed.)

	HSR	SEC	SPED	ELED TEOP	ELED BHAM	Woodring	WWU
N	45	14	14	8	21	102	954
Not at all	2%	7%	7%			3%	6%
A little	7%	14%			5%	6%	12%
Somewhat	11%	36%	7%	38%	5%	15%	27%
Well	40%	7%	36%	25%	43%	34%	36%
Very well	40%	36%	50%	38%	48%	42%	19%

Employment and Education (cont.)

E.2.d. How valuable were the following in preparing you for your {current/primary} job? (Asked of respondents who indicated in E.2. that their current principal activity is "employment, full-time paid", "employment, part-time paid" and did not major in general studies while at Western.) (Five-point scale of "not at all valuable" to "very valuable.") (Means are reported.)

	HSR	SEC	SPED	ELED TEOP	ELED BHAM	Woodring	WWU
N	41	11	13	7	20	92	737
Classes at Western in your major	4.4	4.6	4.2	4.6	4.3	4.4	4.0
Classes at Western outside your major	3.3	3.4	2.9	3.7	3.3	3.3	3.1
Other experiences at Western	4.0	3.9	3.2	3.4	3.7	3.8	3.8

E.2.e. How satisfied are you with your {current/primary} job? (Asked of respondents who indicated in E.2. that their current principal activity is "employment, full-time paid" or "employment, part-time paid.")

	HSR	SEC	SPED	ELED TEOP	ELED BHAM	Woodring	WWU
N	41	11	13	7	20	92	744
Not at all satisfied	5%					2%	5%
A little satisfied		9%	8%			2%	8%
Somewhat satisfied	20%		23%	14%	30%	20%	21%
Satisfied	42%	64%	31%	57%	5%	36%	35%
Very satisfied	34%	27%	39%	29%	65%	40%	31%

E.2.f. How likely are you to stay in the same type of work for the next three years? (Asked of respondents who indicated in E.2. that their current principal activity is "employment, full-time paid" or "employment, part-time paid.")

	HSR	SEC	SPED	ELED TEOP	ELED BHAM	Woodring	WWU
N	41	11	13	7	20	92	730
Not at all likely	15%	9%			15%	11%	19%
A little likely	7%	9%			10%	7%	13%
Somewhat likely	17%	9%	8%		5%	11%	16%
Likely	7%	18%	8%	43%	5%	11%	20%
Very likely	54%	55%	85%	57%	65%	61%	33%

Employment: Industry

E.2.g. In which industry/field is your {current/primary} job? (Asked of respondents who indicated in E.2. that their current principal activity is "employment, full-time paid" or "employment, part-time paid" or indicated in B.2.b.6. that they are currently employed.)

	HSR	SEC	SPED	ELED TEOP	ELED BHAM	Woodring	WWU
N	41	11	14	7	21	94	817
Accounting							3%
Agriculture/Natural Resources/Environment							3%
Arts/Design/Planning							6%
Communication							1%
Computer Science/Statistics							5%
Consulting							1%
Education/Teaching	7%	82%	93%	100%	95%	55%	16%
Engineering							5%
Financial Services							3%
Food service							5%
Government	7%					3%	2%
Health care	10%		7%			5%	6%
Hospitality/Travel	5%					2%	2%
Law enforcement	2%					1%	0%
Legal						-	1%
Management/Administration		9%				1%	5%
Marketing/Sales	2%	9%				2%	9%
Non-profit	32%					14%	5%
Politics							0%
Research							3%
Social Services	22%					10%	4%
Other, please specify below	12%				5%	6%	17%

Employment: Job Search

E.2.h. When were you offered the first career-oriented job you have held since graduation? (Asked of respondents who indicated in E.2. that their current principal activity is "employment, full-time paid" or "employment, part-time paid.")

	HSR	SEC	SPED	ELED TEOP	ELED BHAM	Woodring	WWU
N	41	11	13	7	20	92	748
While still attending Western	22%		31%	29%	15%	20%	21%
Within three months after graduating from Western	37%	55%	46%	71%	40%	44%	25%
Three to six months after graduating from Western	20%	9%	8%		25%	16%	19%
More than six months after graduating from Western	12%	27%	8%		15%	13%	19%
I have not held a career-oriented job since graduation	10%	9%	8%		5%	8%	16%

E.2.i. How did you learn about your {current/primary} job? (Asked of respondents who indicated in E.2. that their current principal activity is "employment, full-time paid" or "employment, part-time paid.")

	HSR	SEC	SPED	ELED TEOP	ELED BHAM	Woodring	WWU
N	41	11	13	7	20	92	741
Newspaper							1%
Online job sites	24%	18%	23%	-	10%	19%	26%
Employer website	17%	9%	54%	43%	55%	32%	13%
Previously employed there	12%					5%	7%
Internship	12%	27%	8%	29%	5%	13%	8%
Networking/personal contact/friend or family	29%	36%	15%	14%	15%	24%	28%
Employment agency					5%	1%	3%
Faculty/Advisor					5%	1%	3%
Western major department		9%				1%	1%
Western's Career Services Center (career fairs, Viking CareerLink, on-campus recruiting)	2%				5%	2%	4%
Professional organization	2%					1%	1%
Started a business							0%
Other, please specify below:				14%		1%	5%

Employment and Education (cont.)

E.2.j What is your total pre-tax annual salary before deductions? OR Including all your jobs, what is your pre-tax annual salary? (Asked of respondents who indicated in E.2. that their current principal activity is "employment, full-time paid".) (Respondents reporting more than one job were asked to include all jobs). (OSR excluded cases where those employed full-time reported annual salaries of \$15k or lower, and where those employed full- or part-time reported annual salaries of \$200k or greater.)

	HSR	SEC	SPED	ELED TEOP	ELED BHAM	Woodring	WWU
N	30	5	11	4	11	61	511
Mean	\$31,063	\$32,480	\$33,537	\$40,875	\$38,759	\$33,657	\$38,014

E.2.k. Does your compensation for this job include the following benefits? Check all that apply. (Asked of respondents who indicated in E.2. that their current principal activity is "employment, full-time paid" or "employment, part-time paid.")

	HSR	SEC	SPED	ELED TEOP	ELED BHAM	Woodring	WWU
N	39	10	13	6	20	88	726
Health insurance	80%	70%	69%	83%	60%	73%	69%
Dental insurance	74%	60%	69%	83%	65%	71%	58%
Retirement savings plan	67%	60%	62%	100%	65%	67%	57%
Other	15%	10%		17%	10%	11%	17%
None	15%	30%	31%		25%	21%	28%

E.2.l. Were you offered any special compensation to entice you to accept this position? Check all that apply. (Asked of respondents who indicated in E.2. that their current principal activity is "employment, full-time paid" or "employment, part-time paid.")

	HSR	SEC	SPED	ELED TEOP	ELED BHAM	Woodring	WWU
N	37	10	13	6	20	86	717
Signing bonus			8%			1%	3%
Stock options	3%					1%	4%
Moving expenses					5%	1%	5%
Other	5%					2%	5%
None	92%	100%	92%	100%	95%	94%	87%

Educational Debt

E.3. How much is currently owed for your education? Include amounts borrowed through credit cards, student loans and other loans.

	HSR	SEC	SPED	ELED TEOP	ELED BHAM	Woodring	WWU
N	49	14	14	7	22	106	967
Mean	\$15,172	\$16,857	\$32,536	\$44,143	\$18,000	\$20,188	\$14,380

E.3.a. Has your educational debt impacted your decisions regarding the following? (Asked of respondents who indicated in E.3. that they have debt.)

	HSR	SEC	SPED	ELED TEOP	ELED BHAM	Woodring	WWU
N	28	9	12	5	14	68	559
Job choices							
Yes	61%	67%	50%	60%	64%	60%	61%
No	39%	33%	50%	40%	36%	40%	39%
Educational goals							
Yes	86%	67%	67%	80%	86%	79%	68%
No	14%	33%	33%	20%	14%	21%	32%
Where you live							
Yes	76%	78%	75%	60%	86%	77%	61%
No	24%	22%	25%	40%	14%	23%	39%

F. College of Fine and Performing Arts

Satisfaction and Principal Activities

F.1. How satisfied are you with Western's contribution to your development in each of the following skills?
(Scale of 1-5, very dissatisfied to very satisfied.) (Means are reported.)

	ART	DSGN	MUS	THTR & DNC	CFPA	WWU
N	17	33	12	15	73	1030
Writing skills	4.0	3.6	3.5	3.9	3.7	4.1
Oral communication skills	4.2	3.6	3.7	4.0	3.8	4.1
Critically evaluate information	4.4	4.1	3.9	4.3	4.2	4.3
Work or learn independently	4.4	4.4	3.9	4.5	4.3	4.3
Work cooperatively in a group	4.0	4.0	3.6	4.4	4.0	4.2
Appreciation of the arts	4.7	4.3	4.3	4.5	4.4	3.9
Apply scientific principles and methods	3.5	3.4	3.1	3.4	3.3	3.9
Apply quantitative principles and methods	3.5	3.4	3.3	3.7	3.5	3.9
Awareness of cultural and social differences among people	4.4	4.0	3.7	4.2	4.1	4.3
Use library resources for research	4.1	3.4	3.6	4.0	3.7	3.9
Work effectively with technology appropriate for your field	3.9	4.6	3.3	3.9	4.1	4.0

F.2. Which of the following best describes your current PRINCIPAL activity?

	ART	DSGN	MUS	THTR & DNC	CFPA	WWU
N	18	33	12	15	74	1,083
Employment, full-time paid	67%	91%	58%	33%	68%	62%
Employment, part-time paid	11%	6%	17%	33%	15%	13%
Seeking employment	11%			20%	7%	7%
Graduate or professional school, full-time			17%		3%	8%
Graduate or professional school, part-time						1%
Additional undergraduate coursework				7%	1%	1%
Military service						
Volunteer activity (e.g. Peace Corps, Americorps)	11%			7%	4%	4%
Starting or raising a family						1%
Traveling			8%		1%	2%
Other, please specify		3%			1%	3%

Principal Activity: Employment

F.2.a. Do you have more than one job? (Asked of respondents who indicated in F.2 that their principal activity is full or part-time employment).

	ART	DSGN	MUS	THTR & DNC	CFPA	WWU
N	13	32	9	9	59	755
Yes	23%	22%	11%	33%	24%	17%
No	77%	78%	89%	67%	76%	83%

F.2.b. How closely is your {current/primary} job related to your major at WWU? (Asked of respondents who indicated in F.2 that their current principal activity is employment, and were not a general studies major while at Western.)

	ART	DSGN	MUS	THTR & DNC	CFPA	WWU
N	13	33	10	9	61	831
Same field	62%	91%	20%	44%	66%	40%
Related field		9%	10%	33%	12%	30%
Different field	39%		70%	22%	23%	30%

F.2.b.1. Did you seek employment in your academic field? (Asked of respondents who indicated that they have sought employment since graduating from Western, or indicated in F.2.d.1. that their current job is in a "related field" or "different field" from their major/ program at Western and did not major in general studies while at Western.)

	ART	DSGN	MUS	THTR & DNC	CFPA	WWU
N	5	3	9	5	22	533
Yes	20%	67%	44%	60%	46%	68%
No	80%	33%	56%	40%	55%	32%

F.2.c. How well did your education at Western prepare you for success in the job market? (Asked of respondents who indicated in F.2. that their current principal activity is "employment, full-time paid", "employment, part-time paid" or indicated in B.2.b.6.a. that they have sought employment since graduating from Western or indicated in B.2.b.6. that they are currently employed.)

	ART	DSGN	MUS	THTR & DNC	CFPA	WWU
N	15	33	11	12	67	954
Not at all	7%		9%		3%	6%
A little		3%	9%	8%	5%	12%
Somewhat	33%	12%	55%	25%	27%	27%
Well	40%	36%	9%	42%	33%	36%
Very well	20%	49%	18%	25%	33%	19%

Employment and Education (cont.)

F.2.d. How valuable were the following in preparing you for your {current/primary} job? (Asked of respondents who indicated in F.2. that their current principal activity is "employment, full-time paid", "employment, part-time paid" and did not major in general studies while at Western.) (Five-point scale of "not at all valuable" to "very valuable.") (Means are reported.)

	ART	DSGN	MUS	THTR & DNC	CFPA	WWU
N	13	32	9	8	58	737
Classes at Western in your major	3.9	4.8	4.2	4.5	4.5	4.0
Classes at Western outside your major	3.0	2.9	3.4	3.8	3.1	3.1
Other experiences at Western	3.1	3.7	3.8	4.1	3.6	3.8

F.2.e. How satisfied are you with your {current/primary} job? (Asked of respondents who indicated in F.2. that their current principal activity is "employment, full-time paid" or "employment, part-time paid.")

	ART	DSGN	MUS	THTR & DNC	CFPA	WWU
N	12	32	9	8	57	744
Not at all satisfied		6%			4%	5%
A little satisfied	17%	3%	33%		9%	8%
Somewhat satisfied	17%	13%	11%	38%	16%	21%
Satisfied	25%	25%	33%	13%	26%	35%
Very satisfied	42%	53%	22%	50%	46%	31%

F.2.f. How likely are you to stay in the same type of work for the next three years? (Asked of respondents who indicated in F.2. that their current principal activity is "employment, full-time paid" or "employment, part-time paid.")

	ART	DSGN	MUS	THTR & DNC	CFPA	WWU
N	12	32	9	8	57	730
Not at all likely	8%		22%	13%	7%	19%
A little likely	8%	3%	11%		5%	13%
Somewhat likely	25%	9%	11%	13%	12%	16%
Likely	8%	19%	22%	50%	23%	20%
Very likely	50%	69%	33%	25%	53%	33%

Employment: Industry

F.2.g. In which industry/field is your {current/primary} job? (Asked of respondents who indicated in F.2. that their current principal activity is "employment, full-time paid" or "employment, part-time paid" or indicated in B.2.b.6. that they are currently employed.)

	ART	DSGN	MUS	THTR & DNC	CFPA	WWU
N	12	33	10	9	60	817
Accounting						3%
Agriculture/Natural Resources/Environment						3%
Arts/Design/Planning	50%	94%		11%	58%	6%
Communication		3%	10%		3%	1%
Computer Science/Statistics			10%		2%	5%
Consulting						1%
Education/Teaching	25%		20%	11%	10%	16%
Engineering						5%
Financial Services				11%	2%	3%
Food service	8%		10%		3%	5%
Government						2%
Health care						6%
Hospitality/Travel						2%
Law enforcement						0%
Legal						1%
Management/Administration			20%	11%	5%	5%
Marketing/Sales	8%		20%	33%	8%	9%
Non-profit	8%	3%			3%	5%
Politics						0%
Research						3%
Social Services						4%
Other, please specify below			10%	22%	5%	17%

Employment: Job Search

F.2.h. When were you offered the first career-oriented job you have held since graduation? (Asked of respondents who indicated in F.2. that their current principal activity is "employment, full-time paid" or "employment, part-time paid.")

	ART	DSGN	MUS	THTR & DNC	CFPA	WWU
N	12	32	9	8	57	748
While still attending Western	25%	25%	11%	13%	21%	21%
Within three months after graduating from Western	33%	28%	44%	25%	30%	25%
Three to six months after graduating from Western	17%	22%	11%	13%	18%	19%
More than six months after graduating from Western		25%	11%	25%	19%	19%
I have not held a career-oriented job since graduation	25%		22%	25%	12%	16%

F.2.i. How did you learn about your {current/primary} job? (Asked of respondents who indicated in F.2. that their current principal activity is "employment, full-time paid" or "employment, part-time paid.")

	ART	DSGN	MUS	THTR & DNC	CFPA	WWU
N	12	32	9	8	57	741
Newspaper						1%
Online job sites	17%	25%	33%	25%	26%	26%
Employer website	8%	6%	22%	13%	11%	13%
Previously employed there			11%		2%	7%
Internship		6%		13%	5%	8%
Networking/personal contact/friend or family	42%	31%	22%	50%	32%	28%
Employment agency	8%	22%			12%	3%
Faculty/Advisor	8%	3%			4%	3%
Western major department	8%				2%	1%
Western's Career Services Center (career fairs, Viking CareerLink, on-campus recruiting)		3%			2%	4%
Professional organization						1%
Started a business						0%
Other, please specify below:	8%	3%	11%		5%	5%

Employment: Job Details

F.2.j. What is your total pre-tax annual salary? OR Including all your jobs, what is your pre-tax annual salary? (Asked of respondents who indicated in F.2.that their current principal activity is "employment, full-time paid".) (Respondents reporting more than one job were asked to include all jobs). (OSR excluded cases where those employed full-time reported annual salaries of \$15k or lower, and where those employed full- or part-time reported annual salaries of \$200k or greater.)

	ART	DSGN	MUS	THTR & DNC	CFPA	WWU
N	7	28	4	3	38	511
Mean	\$35,786	\$43,292	\$31,201	\$37,000	\$40,526	\$38,014

F.2.k. Does your compensation for this job include the following benefits? Check all that apply. (Asked of respondents who indicated in F.2. that their current principal activity is "employment, full-time paid" or "employment, part-time paid.")

	ART	DSGN	MUS	THTR & DNC	CFPA	WWU
N	12	32	8	8	56	726
Health insurance	67%	78%	100%	63%	75%	69%
Dental insurance	50%	63%	75%	38%	55%	58%
Retirement savings plan	42%	53%	100%	50%	54%	57%
Other	17%	25%	25%	13%	21%	17%
None	33%	19%		38%	23%	28%

F.2.l. Were you offered any special compensation to entice you to accept this position? Check all that apply. (Asked of respondents who indicated in F.2. that their current principal activity is "employment, full-time paid" or "employment, part-time paid.")

	ART	DSGN	MUS	THTR & DNC	CFPA	WWU
N	12	32	8	8	56	717
Signing bonus						3%
Stock options		6%	13%		5%	4%
Moving expenses			13%		2%	5%
Other	8%	13%			9%	5%
None	92%	81%	88%	100%	86%	87%

Educational Debt

F.3. How much is currently owed for your education? Include amounts borrowed through credit cards, student loans and other loans.

	ART	DSGN	MUS	THTR & DNC	CFPA	WWU
N	15	31	11	13	66	967
Mean	\$16,000	\$10,165	\$23,455	\$12,621	\$13,973	\$14,380

F.3.a. Has your educational debt impacted your decisions regarding the following? (Asked of respondents who indicated in F.3. that they have debt.)

	ART	DSGN	MUS	THTR & DNC	CFPA	WWU
N	8	17	8	7	38	559
Job choices						
Yes	75%	77%	75%	57%	74%	61%
No	25%	24%	25%	43%	26%	39%
Educational goals						
Yes	75%	50%	75%	71%	65%	68%
No	25%	50%	25%	29%	35%	32%
Where you live						
Yes	75%	69%	88%	57%	73%	61%
No	25%	31%	13%	43%	27%	39%

G. College of Humanities and Social Sciences

Satisfaction and Principal Activities

G.1. How satisfied are you with Western's contribution to your development in each of the following skills? (Scale of 1-5, very dissatisfied to very satisfied.)
(Means are reported.)

	ANTH	COMM	CSD	ENG	GSTU	HIST	JOUR	LANG	PE	PLSC	PSY	SOC	LING	OTHER	CHSS	WWU
N	33	32	13	52	23	31	25	37	58	31	65	39	16	14	437	1030
Writing skills	4.1	4.3	3.9	4.5	4.4	4.3	4.6	4.1	4.0	4.2	4.3	4.3	4.2	4.7	4.3	4.1
Oral communication skills	3.9	4.7	3.9	4.1	4.1	4.0	4.6	4.1	4.2	4.1	4.2	3.9	4.1	4.3	4.1	4.1
Critically evaluate information	4.1	4.4	4.1	4.3	4.2	4.2	4.4	4.4	4.3	4.3	4.5	4.3	4.3	4.6	4.3	4.3
Work or learn independently	4.2	4.3	4.2	4.3	4.2	4.1	4.2	4.4	4.4	4.1	4.5	4.3	4.3	4.3	4.3	4.3
Work cooperatively in a group	4.0	4.6	4.2	4.0	4.3	3.8	4.4	4.0	4.3	4.0	4.4	4.3	4.2	4.0	4.2	4.2
Appreciation of the arts	4.1	4.1	3.8	4.2	4.1	3.8	4.1	3.9	3.9	3.9	3.8	3.9	4.0	4.1	4.0	3.9
Apply scientific principles and methods	3.7	3.7	3.9	3.4	4.0	3.5	3.7	3.7	4.2	3.4	4.4	3.9	3.8	3.9	3.9	3.9
Apply quantitative principles and methods	3.9	3.7	3.9	3.4	3.9	3.4	3.7	3.7	4.2	3.5	4.2	4.1	3.8	4.3	3.9	3.9
Awareness of cultural and social differences among people	4.5	4.4	4.3	4.3	4.3	4.3	4.3	4.6	4.3	4.4	4.3	4.5	4.4	4.6	4.4	4.3
Use library resources for research	3.9	4.1	4.5	4.2	3.9	4.3	4.0	4.0	4.2	3.9	4.1	3.9	4.1	4.6	4.1	3.9
Work effectively with technology appropriate for your field	3.8	4.4	4.5	3.9	4.0	4.0	4.1	4.1	4.0	4.0	4.1	4.1	4.1	4.4	4.1	4.0

G. College of Humanities and Social Sciences

Satisfaction and Current Activities

G.2. Which of the following best describes your current PRINCIPAL activity?

	ANTH	COMM	CSD	ENG	GSTU	HIST	JOUR	LANG	PE	PLSC	PSY	SOC	LING	OTHER	CHSS	WWU
N	36	32	13	53	25	32	25	38	62	32	66	41	17	15	456	1083
Employment, full-time paid	47%	78%	31%	45%	44%	31%	68%	50%	58%	59%	65%	59%	47%	53%	55%	62%
Employment, part-time paid	19%	6%	31%	25%	20%	34%	8%	18%	19%	9%	8%	12%	24%	27%	17%	13%
Seeking employment	6%	6%		11%	12%	9%	12%	8%	3%	13%	5%	5%	12%	7%	8%	7%
Graduate or professional school, full-time	6%	3%	15%	11%	8%	13%		8%	11%	9%	14%	10%	6%	7%	9%	8%
Graduate or professional school, part-time										3%			6%		0%	1%
Additional undergraduate coursework	6%	3%	8%		4%				2%		2%				2%	1%
Military service																
Volunteer activity (e.g. Peace Corps, Americorps)	11%			4%	4%			11%	2%	3%	2%	10%	6%		4%	4%
Starting or raising a family	3%								3%		5%				1%	1%
Traveling	3%		8%	2%	4%	3%	4%	3%	2%			2%			2%	2%
Other, please specify		3%	8%	2%	4%	9%	8%	3%		3%	2%	2%		7%	3%	3%

Principal Activity: Employment

G.2.a. Do you have more than one job? (Asked of respondents who indicated in G.2 that their principal activity is full or part-time employment).

	ANTH	COMM	CSD	ENG	GSTU	HIST	JOUR	LANG	PE	PLSC	PSY	SOC	LING	OTHER	CHSS	WWU
N	22	26	8	35	14	20	18	25	43	20	46	27	11	12	307	755
Yes	23%	19%	38%	26%	21%	30%	6%	24%	23%	10%	17%	33%	27%	25%	22%	17%
No	77%	81%	63%	74%	79%	70%	94%	76%	77%	90%	83%	67%	73%	75%	78%	83%

G.2.b. How closely is your {current/primary} job related to your major at WWU? (Asked of respondents who indicated in G.2 that their current principal activity is employment, and were not a general studies major while at Western.)

	ANTH	COMM	CSD	ENG	GSTU	HIST	JOUR	LANG	PE	PLSC	PSY	SOC	LING	OTHER	CHSS	WWU
N	23	28	11	37		27	20	30	50	23	54	30	12	12	334	831
Same field	9%	21%	27%	16%		7%	20%	30%	38%	26%	22%	7%		8%	21%	40%
Related field	17%	57%	46%	46%		26%	45%	40%	38%	26%	32%	37%	42%	17%	36%	30%
Different field	74%	21%	27%	38%		67%	35%	30%	24%	48%	46%	57%	58%	75%	44%	30%

G.2.b.1. Did you seek employment in your academic field? (Asked of respondents who indicated that they have sought employment since graduating from Western, or indicated in D.2.b. that their current job is in a "related field" or "different field" from their major/ program at Western and did not major in general studies while at Western.)

	ANTH	COMM	CSD	ENG	GSTU	HIST	JOUR	LANG	PE	PLSC	PSY	SOC	LING	OTHER	CHSS	WWU
N	25	22	9	35		27	17	21	32	19	45	30	13	12	284	533
Yes	48%	73%	56%	74%		56%	65%	57%	75%	63%	62%	60%	62%	50%	63%	68%
No	52%	27%	44%	26%		44%	35%	43%	25%	37%	38%	40%	39%	50%	37%	32%

Employment and Education (cont.)

G.2.c. How well did your education at Western prepare you for success in the job market? (Asked of respondents who indicated in G.2. that their current principal activity is "employment, full-time paid", "employment, part-time paid" or indicated in B.2.b.6.a. that they have sought employment since graduating from Western or indicated in B.2.b.6. that they are currently employed.)

	ANTH	COMM	CSD	ENG	GSTU	HIST	JOUR	LANG	PE	PLSC	PSY	SOC	LING	OTHER	CHSS	WWU
N	29	30	12	46	21	31	24	32	53	29	59	34	15	14	401	954
Not at all	14%	7%	8%	11%	14%	13%	8%		2%	14%	5%				7%	6%
A little	21%	10%	33%	13%	5%	23%	13%	16%	15%	14%	10%	18%	27%	21%	16%	12%
Somewhat	17%	17%	33%	33%	33%	19%	25%	34%	25%	35%	42%	44%	27%	43%	31%	27%
Well	41%	50%	17%	39%	38%	39%	33%	41%	36%	21%	27%	27%	47%	36%	34%	36%
Very well	7%	17%	8%	4%	10%	7%	21%	9%	23%	17%	15%	12%			13%	19%

G.2.d. How valuable were the following in preparing you for your {current/primary} job? (Asked of respondents who indicated in G.2. that their current principal activity is "employment, full-time paid", "employment, part-time paid" and did not major in general studies while at Western.) (Five-point scale of "not at all valuable" to "very valuable.") (Means are reported.)

	ANTH	COMM	CSD	ENG	GSTU	HIST	JOUR	LANG	PE	PLSC	PSY	SOC	LING	OTHER	CHSS	WWU
N	22	26	8	34		20	18	25	43	21	45	27	11	11	291	737
Classes at Western in your major	3.4	4.3	3.6	3.8		3.2	4.3	3.6	4.2	3.3	3.6	3.3	3.6	3.6	3.7	4.0
Classes at Western outside your major	3.1	3.2	3.1	3.1		3.1	3.2	3.3	3.2	3.5	3.2	3.0	3.5	3.1	3.2	3.1
Other experiences at Western	3.7	4.1	3.9	3.6		3.9	4.0	3.9	4.0	4.1	3.9	3.9	4.2	3.4	3.9	3.8

Employment and Education (cont.)

G.2.e. How satisfied are you with your {current/primary} job? (Asked of respondents who indicated in G.2. that their current principal activity is "employment, full-time paid" or "employment, part-time paid.")

	ANTH	COMM	CSD	ENG	GSTU	HIST	JOUR	LANG	PE	PLSC	PSY	SOC	LING	OTHER	CHSS	WWU
N	21	26	7	35	14	20	18	25	42	21	45	27	11	11	303	744
Not at all satisfied	19%			6%	7%	20%			5%		9%		9%	18%	6%	5%
A little satisfied	10%			6%	14%	5%	6%	12%	17%	19%	9%	7%	9%	9%	10%	8%
Somewhat satisfied	24%	27%	43%	40%	21%	25%	33%	24%	14%	24%	29%	26%	36%	36%	27%	21%
Satisfied	24%	39%	43%	34%	43%	35%	33%	44%	41%	24%	29%	41%	46%	27%	35%	35%
Very satisfied	24%	35%	14%	14%	14%	15%	28%	20%	24%	33%	24%	26%		9%	22%	31%

G.2.f. How likely are you to stay in the same type of work for the next three years? (Asked of respondents who indicated in G.2. that their current principal activity is "employment, full-time paid" or "employment, part-time paid.")

	ANTH	COMM	CSD	ENG	GSTU	HIST	JOUR	LANG	PE	PLSC	PSY	SOC	LING	OTHER	CHSS	WWU
N	21	26	7	35	14	20	18	25	42	21	45	27	11	11	303	730
Not at all likely	43%	8%	43%	29%	43%	40%	22%	8%	26%	19%	27%	26%	27%	73%	28%	19%
A little likely	19%	12%	14%	14%	14%	15%	17%	16%	14%	29%	13%	11%	18%	18%	16%	13%
Somewhat likely		27%		29%	7%	20%	28%	20%	14%	19%	22%	26%	9%		18%	16%
Likely	19%	35%		17%	29%	5%	11%	28%	14%	10%	22%	19%	36%		18%	20%
Very likely	19%	19%	43%	11%	7%	20%	22%	28%	31%	24%	16%	19%	9%	9%	20%	33%

Employment: Industry

G.2.g. In which industry/field is your {current/primary} job? (Asked of respondents who indicated in G.2. that their current principal activity is "employment, full-time paid" or "employment, part-time paid" or indicated in B.2.b.6. that they are currently employed.)

	ANTH	COMM	CSD	ENG	GSTU	HIST	JOUR	LANG	PE	PLSC	PSY	SOC	LING	OTHER	CHSS	WWU
N	22	28	9	36	17	27	18	30	46	23	52	30	11	12	338	817
Accounting					6%	4%						3%			1%	3%
Agriculture/Natural Resources/Environment		4%									2%				1%	3%
Arts/Design/Planning		4%					6%					3%			1%	6%
Communication		14%		3%		4%	11%					3%			3%	1%
Computer Science/Statistics				3%	6%					13%					2%	5%
Consulting				3%						4%	2%				1%	1%
Education/Teaching	23%	14%	22%	33%	24%	41%	6%	57%	4%	4%	12%	10%	46%		18%	16%
Engineering									2%						0%	5%
Financial Services	5%			3%						4%	2%	3%			2%	3%
Food service	18%	14%	11%	3%	6%	19%	11%	7%	4%	4%	8%	10%	9%	17%	9%	5%
Government						4%			2%	4%					1%	2%
Health care	5%	7%	33%	3%	6%				39%		14%	3%	9%		10%	6%
Hospitality/Travel				3%				3%	7%	4%	2%		9%		2%	2%
Law enforcement																0%
Legal						4%				17%	2%				2%	1%
Management/Administration	9%	4%		8%	6%	4%	6%	7%	4%	9%	4%	7%		8%	5%	5%
Marketing/Sales	18%	11%		11%	12%	4%	17%		4%	9%	10%	13%	9%	17%	10%	9%
Non-profit		4%	11%	6%	6%	7%	11%	3%	4%	13%	4%	7%			6%	5%
Politics	5%									4%					1%	0%
Research	5%	4%				4%		3%			12%	3%			3%	3%
Social Services	9%			3%	6%				4%		15%	10%		8%	5%	4%
Other, please specify below	5%	21%	22%	19%	24%	7%	33%	20%	24%	9%	14%	23%	18%	50%	19%	17%

Employment: Job Search

G.2.h. When were you offered the first career-oriented job you have held since graduation? (Asked of respondents who indicated in G.2. that their current principal activity is "employment, full-time paid" or "employment, part-time paid.")

	ANTH	COMM	CSD	ENG	GSTU	HIST	JOUR	LANG	PE	PLSC	PSY	SOC	LING	OTHER	CHSS	WWU
N	22	26	8	35	14	20	18	25	42	21	45	27	11	11	305	748
While still attending Western	14%	23%	13%	20%	21%	10%	6%	24%	14%	5%	11%	4%	9%	18%	13%	21%
Within three months after graduating from Western	5%	31%	50%	17%	29%	20%	28%	32%	29%	29%	22%	19%	18%		23%	25%
Three to six months after graduating from Western	27%	19%	13%	26%	14%	15%	28%	12%	17%	19%	24%	30%	18%	18%	21%	19%
More than six months after graduating from Western	18%	15%		9%	36%	10%	28%	4%	29%	33%	13%	30%	9%	27%	19%	19%
I have not held a career-oriented job since graduation	36%	12%	25%	29%		45%	11%	28%	12%	14%	29%	19%	46%	36%	23%	16%

Employment: Job Search

G.2.i. How did you learn about your {current/primary} job? (Asked of respondents who indicated in G.2. that their current principal activity is "employment, full-time paid" or "employment, part-time paid.")

	ANTH	COMM	CSD	ENG	GSTU	HIST	JOUR	LANG	PE	PLSC	PSY	SOC	LING	OTHER	CHSS	WWU
N	21	26	7	35	14	20	16	25	42	21	45	27	11	11	301	741
Newspaper									2%		2%	4%			1%	1%
Online job sites	38%	19%	14%	23%	29%	20%	19%	28%	38%	33%	31%	44%	36%	36%	30%	26%
Employer website	10%	4%	14%	20%	7%	20%	6%	8%	10%	10%	11%	7%	9%	18%	11%	13%
Previously employed there	10%	8%		3%	14%	10%	6%	8%	10%	5%	9%	4%			7%	7%
Internship		8%				10%	19%	4%	14%	5%					5%	8%
Networking/personal contact/friend or family	24%	39%	29%	37%	43%	25%	19%	24%	17%	29%	31%	22%	9%	27%	28%	28%
Employment agency							6%			10%	7%	7%	18%		3%	3%
Faculty/Advisor			14%	3%				12%			4%		9%		2%	3%
Western major department	5%							8%	2%					9%	1%	1%
Western's Career Services Center (career fairs, Viking CareerLink, on-campus recruiting)		4%	29%	6%		5%					2%		9%		3%	4%
Professional organization	5%								2%				9%	9%	1%	1%
Started a business		4%													0%	0%
Other, please specify below:	10%	15%		9%	7%	10%	25%	8%	5%	10%	2%	11%			8%	5%

Employment: Job Details

G.2.j. What is your total pre-tax annual salary? OR Including all your jobs, what is your pre-tax annual salary? (Asked of respondents who indicated in G.2. that their current principal activity is "employment, full-time paid".) (Respondents reporting more than one job were asked to include all jobs). (OSR excluded cases where those employed full-time reported annual salaries of \$15k or lower, and where those employed full- or part-time reported annual salaries of \$200k or greater.)

	ANTH	COMM	CSD	ENG	GSTU	HIST	JOUR	LANG	PE	PLSC	PSY	SOC	LING	OTHER	CHSS	WWU
N	12	19	2	17	9	6	13	15	27	15	30	17	5	6	180	511
Mean	\$29,117	\$30,984	\$22,000	\$31,769	\$39,511	\$34,500	\$31,625	\$29,060	\$31,123	\$33,023	\$30,437	\$33,047	\$25,776	\$28,333	\$31,266	\$38,014

G.2.k. Does your compensation for this job include the following benefits? Check all that apply. (Asked of respondents who indicated in G.2. that their current principal activity is "employment, full-time paid" or "employment, part-time paid.")

	ANTH	COMM	CSD	ENG	GSTU	HIST	JOUR	LANG	PE	PLSC	PSY	SOC	LING	OTHER	CHSS	WWU
N	21	25	5	35	14	19	18	25	42	21	41	25	11	11	293	726
Health insurance	57%	64%	40%	54%	79%	63%	61%	80%	55%	67%	63%	52%	55%	55%	60%	69%
Dental insurance	38%	56%	40%	46%	64%	47%	44%	40%	43%	57%	51%	52%	27%	36%	46%	58%
Retirement savings plan	43%	52%	20%	49%	57%	53%	39%	32%	50%	52%	44%	44%	27%	27%	44%	57%
Other	10%	20%		20%		16%	6%	12%	14%	24%	10%	20%	9%	9%	14%	17%
None	38%	32%	60%	43%	21%	26%	39%	16%	41%	33%	34%	44%	36%	46%	37%	28%

G.2.l. Were you offered any special compensation to entice you to accept this position? Check all that apply. (Asked of respondents who indicated in G.2. that their current principal activity is "employment, full-time paid" or "employment, part-time paid.")

	ANTH	COMM	CSD	ENG	GSTU	HIST	JOUR	LANG	PE	PLSC	PSY	SOC	LING	OTHER	CHSS	WWU
N	21	25	5	34	14	19	18	25	42	21	40	25	11	11	291	717
Signing bonus																3%
Stock options	5%	8%		3%		11%	6%		2%		3%	4%			3%	4%
Moving expenses	5%			3%		5%		4%	2%			4%	9%		2%	5%
Other	10%	8%					6%	8%	2%	5%	8%	4%	18%	9%	6%	5%
None	86%	84%	100%	94%	100%	90%	89%	88%	93%	95%	90%	88%	82%	91%	90%	87%

Educational Debt

G.3. How much is currently owed for your education? Include amounts borrowed through credit cards, student loans and other loans.

	ANTH	COMM	CSD	ENG	GSTU	HIST	JOUR	LANG	PE	PLSC	PSY	SOC	LING	OTHER	CHSS	WWU
N	32	28	10	48	22	29	23	35	54	30	58	37	15	14	404	967
Mean	\$11,463	\$18,934	\$15,000	\$10,884	\$17,250	\$12,076	\$11,526	\$13,249	\$14,120	\$15,617	\$12,922	\$13,334	\$10,000	\$9,607	\$13,349	\$14,380

G.3.a. Has your educational debt impacted your decisions regarding the following? (Asked of respondents who indicated in G.3. that they have debt.)

	ANTH	COMM	CSD	ENG	GSTU	HIST	JOUR	LANG	PE	PLSC	PSY	SOC	LING	OTHER	CHSS	WWU
N	19	19	6	25	15	14	14	21	30	19	32	23	9	7	235	559
Job choices																
Yes	53%	58%	33%	76%	87%	79%	71%	62%	70%	79%	81%	74%	78%	71%	72%	61%
No	47%	42%	67%	24%	13%	21%	29%	38%	30%	21%	19%	26%	22%	29%	28%	39%
Educational goals																
Yes	74%	68%	50%	84%	80%	86%	64%	81%	80%	68%	88%	74%	67%	86%	78%	68%
No	26%	32%	50%	16%	20%	14%	36%	19%	20%	32%	13%	26%	33%	14%	22%	32%
Where you live																
Yes	47%	63%	50%	60%	73%	50%	71%	38%	80%	68%	78%	57%	67%	71%	66%	61%
No	53%	37%	50%	40%	27%	50%	29%	62%	20%	32%	22%	44%	33%	29%	35%	39%

H. Huxley College

Satisfaction and Principal Activities

H.1. How satisfied are you with Western's contribution to your development in each of the following skills?
(Scale of 1-5, very dissatisfied to very satisfied.) (Means are reported.)

	ESCI	ESTU	Huxley	WWU
N	40	37	77	1030
Writing skills	4.1	4.1	4.1	4.1
Oral communication skills	3.8	4.1	3.9	4.1
Critically evaluate information	4.5	4.2	4.3	4.3
Work or learn independently	4.4	4.3	4.3	4.3
Work cooperatively in a group	4.3	4.1	4.2	4.2
Appreciation of the arts	3.5	3.9	3.7	3.9
Apply scientific principles and methods	4.7	4.0	4.3	3.9
Apply quantitative principles and methods	4.5	3.8	4.2	3.9
Awareness of cultural and social differences among people	4.0	4.1	4.0	4.3
Use library resources for research	3.9	3.8	3.9	3.9
Work effectively with technology appropriate for your field	3.9	3.8	3.8	4.0

H.2. Which of the following best describes your current PRINCIPAL activity?

	ESCI	ESTU	Huxley	WWU
N	40	39	79	1,083
Employment, full-time paid	38%	74%	56%	62%
Employment, part-time paid	15%	10%	13%	13%
Seeking Employment	23%	5%	14%	7%
Graduate or professional school, full-time	8%		4%	8%
Graduate or professional school, part-time	3%		1%	1%
Additional undergraduate coursework				1%
Military service				
Volunteer activity (e.g. Peace Corps, Americorps)	3%	8%	5%	4%
Starting or raising a family				1%
Traveling	8%		4%	2%
Other, please specify	5%	3%	4%	3%

Principal Activity: Employment

H.2.a. Do you have more than one job? (Asked of respondents who indicated in H.2 that their principal activity is full or part-time employment).

	ESCI	ESTU	Huxley	WWU
N	21	31	52	755
Yes	19%	23%	21%	17%
No	81%	77%	79%	83%

H.2.b. How closely is your {current/primary} job related to your major at WWU? (Asked of respondents who indicated in H.2. that their current principal activity is "employment, full-time paid", "employment, part-time paid", or that they are currently employed in H.2.c., and were not a general studies major while at Western.)

	ESCI	ESTU	Huxley	WWU
N	25	32	57	831
Same field	44%	28%	35%	40%
Related field	20%	44%	33%	30%
Different field	36%	28%	32%	30%

H.2.b.1. Did you seek employment in your academic field? (Asked of respondents who indicated that they have sought employment since graduating from Western, or indicated in H.2.d.1. that their current job is in a "related field" or "different field" from their major/ program at Western and did not major in general studies while at Western.)

	ESCI	ESTU	Huxley	WWU
N	17	24	41	533
Yes	82%	92%	88%	68%
No	18%	8%	12%	32%

H.2.c. How well did your education at Western prepare you for success in the job market? (Asked of respondents who indicated in H.2. that their current principal activity is "employment, full-time paid", "employment, part-time paid" or indicated in B.2.b.6.a. that they have sought employment since graduating from Western or indicated in B.2.b.6. that they are currently employed.)

	ESCI	ESTU	Huxley	WWU
N	37	34	71	954
Not at all	8%	12%	10%	6%
A little	11%	6%	9%	12%
Somewhat	24%	38%	31%	27%
Well	38%	38%	38%	36%
Very well	19%	6%	13%	19%

Employment and Education (cont.)

H.2.d. How valuable were the following in preparing you for your {current/primary} job? (Asked of respondents who indicated in H.2. that their current principal activity is "employment, full-time paid", "employment, part-time paid" and did not major in general studies while at Western.) (Five-point scale of "not at all valuable" to "very valuable.") (Means are reported.)

	ESCI	ESTU	Huxley	WWU
N	21	31	52	737
Classes at Western in your major	4.3	3.5	3.8	4.0
Classes at Western outside your major	3.3	3.1	3.2	3.1
Other experiences at Western	4.0	3.3	3.6	3.8

H.2.e. How satisfied are you with your {current/primary} job? (Asked of respondents who indicated in H.2. that their current principal activity is "employment, full-time paid" or "employment, part-time paid.")

	ESCI	ESTU	Huxley	WWU
N	21	30	51	744
Not at all satisfied	10%		4%	5%
A little satisfied	5%	10%	8%	8%
Somewhat satisfied	19%	23%	22%	21%
Satisfied	38%	50%	45%	35%
Very satisfied	29%	17%	22%	31%

H.2.f. How likely are you to stay in the same type of work for the next three years? (Asked of respondents who indicated in H.2. that their current principal activity is "employment, full-time paid" or "employment, part-time paid.")

	ESCI	ESTU	Huxley	WWU
N	21	31	52	730
Not at all likely	19%	26%	23%	19%
A little likely	10%	16%	14%	13%
Somewhat likely	14%	10%	12%	16%
Likely	19%	29%	25%	20%
Very likely	38%	19%	27%	33%

Employment: Industry

H.2.g. In which industry/field is your {current/primary} job? (Asked of respondents who indicated in H.2. that their current principal activity is "employment, full-time paid" or "employment, part-time paid" or indicated in B.2.b.6. that they are currently employed.)

	ESCI	ESTU	Huxley	WWU
N	25	30	55	817
Accounting				3%
Agriculture/Natural Resources/Environment	48%	7%	26%	3%
Arts/Design/Planning		7%	4%	6%
Communication				1%
Computer Science/Statistics				5%
Consulting	4%	3%	4%	1%
Education/Teaching	4%	20%	13%	16%
Engineering				5%
Financial Services				3%
Food service	8%	3%	6%	5%
Government	12%	13%	13%	2%
Health care	4%		2%	6%
Hospitality/Travel				2%
Law enforcement				0%
Legal				1%
Management/Administration		7%	4%	5%
Marketing/Sales	4%		2%	9%
Non-profit		3%	2%	5%
Politics				0%
Research	4%		2%	3%
Social Services				4%
Other, please specify below	12%	37%	26%	17%

Employment: Job Search

H.2.h. When were you offered your {current/primary} job? (Asked of respondents who indicated in H.2. that their current principal activity is "employment, full-time paid" or "employment, part-time paid.")

	ESCI	ESTU	Huxley	WWU
N	21	31	52	748
While still attending Western	38%	19%	27%	21%
Within three months after graduating from Western	5%	10%	8%	25%
Three to six months after graduating from Western	19%	10%	14%	19%
More than six months after graduating from Western	19%	39%	31%	19%
I have not held a career-oriented job since graduation	19%	23%	21%	16%

H.2.i. How did you learn about your {current/primary} job? (Asked of respondents who indicated in H.2. that their current principal activity is "employment, full-time paid" or "employment, part-time paid.")

	ESCI	ESTU	Huxley	WWU
N	21	30	51	741
Newspaper		7%	4%	1%
Online job sites	29%	27%	28%	26%
Employer website	10%	13%	12%	13%
Previously employed there	5%	13%	10%	7%
Internship	14%	10%	12%	8%
Networking/personal contact/friend or family	24%	17%	20%	28%
Employment agency				3%
Faculty/Advisor	14%	3%	8%	3%
Western major department	-	3%	2%	1%
Western's Career Services Center (career fairs, Viking CareerLink, on-campus recruiting)		7%	4%	4%
Professional organization				1%
Started a business				0%
Other, please specify below:	5%		2%	5%

Employment: Job Details

H.2.j. What is your total pre-tax annual salary? OR Including all your jobs, what is your pre-tax annual salary? (Asked of respondents who indicated in H.2. that their current principal activity is "employment, full-time paid".) (Respondents reporting more than one job were asked to include all jobs). (OSR excluded cases where those employed full-time reported annual salaries of \$15k or lower, and where those employed full- or part-time reported annual salaries of \$200k or greater.)

	ESCI	ESTU	Huxley	WWU
N	12	22	34	511
Mean	\$34,272	\$34,813	\$34,622	\$38,014

H.2.k. Does your compensation for this job include the following benefits? Check all that apply. (Asked of respondents who indicated in H.2. that their current principal activity is "employment, full-time paid" or "employment, part-time paid.")

	ESCI	ESTU	Huxley	WWU
N	20	30	50	726
Health insurance	70%	60%	64%	69%
Dental insurance	50%	50%	50%	58%
Retirement savings plan	50%	50%	50%	57%
Other	10%	13%	12%	17%
None	30%	33%	32%	28%

H.2.l. Were you offered any special compensation to entice you to accept this position? Check all that apply. (Asked of respondents who indicated in H.2. that their current principal activity is "employment, full-time paid" or "employment, part-time paid.")

	ESCI	ESTU	Huxley	WWU
N	20	30	50	717
Signing bonus				3%
Stock options		3%	2%	4%
Moving expenses				5%
Other	10%		4%	5%
None	90%	97%	94%	87%

Educational Debt

H.3. How much is currently owed for your education? Include amounts borrowed through credit cards, student loans and other loans.

	ESCI	ESTU	Huxley	WWU
N	20	26	46	967
Mean	\$16,650	\$12,315	\$14,200	\$14,380

H.3.a. Has your educational debt impacted your decisions regarding the following? (Asked of respondents who indicated in H.3. that they have debt.)

	ESCI	ESTU	Huxley	WWU
N	18	20	38	559
Job choices				
Yes	61%	45%	53%	61%
No	39%	55%	47%	39%
Educational goals				
Yes	67%	75%	71%	68%
No	33%	25%	29%	32%
Where you live				
Yes	44%	65%	55%	61%
No	56%	35%	45%	39%

I. College of Sciences and Technology

Satisfaction and Principal Activities

I.1. How satisfied are you with Western's contribution to your development in each of the following skills? (Scale of 1-5, very dissatisfied to very satisfied.) (Means are reported.)

	BIOL	CHEM	CSCI	ETEC	GEOL	MATH	PHYS	Other	CST	WWU
N	36	20	22	40	13	21	15	4	167	1030
Writing skills	3.9	4.2	3.6	3.7	3.6	3.7	3.9	4.0	3.8	4.1
Oral communication skills	3.8	4.3	3.6	4.1	3.8	3.7	4.0	4.3	3.9	4.1
Critically evaluate information	4.4	4.8	4.1	4.3	4.2	4.6	4.4	4.5	4.4	4.3
Work or learn independently	4.1	4.9	4.2	4.3	4.3	4.7	4.3	4.8	4.4	4.3
Work cooperatively in a group	4.1	4.7	4.1	4.5	3.8	4.5	3.9	4.5	4.3	4.2
Appreciation of the arts	3.6	4.3	3.7	3.8	3.5	3.8	3.5	4.0	3.7	3.9
Apply scientific principles and methods	4.6	4.9	4.1	4.4	4.3	4.6	4.5	5.0	4.5	3.9
Apply quantitative principles and methods	4.4	4.8	4.2	4.4	4.3	4.7	4.4	4.8	4.5	3.9
Awareness of cultural and social differences among people	4.2	4.0	4.0	4.0	3.7	4.3	4.3	5.0	4.1	4.3
Use library resources for research	3.9	4.3	3.3	3.7	3.8	3.6	3.5	3.3	3.7	3.9
Work effectively with technology appropriate for your field	3.9	4.0	4.5	4.6	3.5	4.0	4.1	4.5	4.1	4.0

I. College of Sciences and Technology

Satisfaction and Current Activities

I.2. Which of the following best describes your current PRINCIPAL activity?

	BIOL	CHEM	CSCI	ETEC	GEOL	MATH	PHYS	Other	CST	WWU
N	38	21	22	45	13	22	18	4	179	1083
Employment, full-time paid	40%	52%	77%	78%	62%	68%	50%	75%	62%	62%
Employment, part-time paid	11%		5%	4%	15%		6%	25%	6%	13%
Seeking employment			5%	9%		5%	17%		5%	7%
Graduate or professional school, full-time	37%	38%	9%	4%	8%	9%	6%		16%	8%
Graduate or professional school, part-time	3%					5%			1%	1%
Additional undergraduate coursework	5%			2%					2%	1%
Military service										
Volunteer activity (e.g. Peace Corps, Americorps)	3%	5%				5%			2%	4%
Starting or raising a family							6%		1%	1%
Traveling		5%				9%	6%		2%	2%
Other, please specify	3%		5%	2%	15%		11%		4%	3%

Principal Activity: Employment

I.2.a. Do you have more than one job? (Asked of respondents who indicated in I.2 that their principal activity is full or part-time employment).

	BIOL	CHEM	CSCI	ETEC	GEOL	MATH	PHYS	Other	CST	WWU
N	18	10	17	31	9	14	8	4	108	755
Yes	17%	10%		10%	22%	14%		25%	11%	17%
No	83%	90%	100%	90%	78%	86%	100%	75%	89%	83%

I.2.b. How closely is your {current/primary} job related to your major at WWU? (Asked of respondents who indicated that their current principal activity is employment, and were not a general studies major while at Western.)

	BIOL	CHEM	CSCI	ETEC	GEOL	MATH	PHYS	Other	CST	WWU
N	27	15	20	34	12	18	10	4	136	831
Same field	22%	53%	85%	77%	25%	44%	20%	100%	52%	40%
Related field	48%	33%	10%	21%	17%	44%	40%		29%	30%
Different field	30%	13%	5%	3%	58%	11%	40%		18%	30%

I.2.b.1. Did you seek employment in your academic field? (Asked of respondents who indicated that they have sought employment since graduating from Western, or indicated in I.2.d.1. that their current job is in a "related field" or "different field" from their major/ program at Western and did not major in general studies while at Western.)

	BIOL	CHEM	CSCI	ETEC	GEOL	MATH	PHYS	Other	CST	WWU
N	23	7	3	9	10	10	10	0	71	533
Yes	74%	71%	67%	100%	90%	30%	80%		75%	68%
No	26%	29%	33%		10%	70%	20%		25%	32%

Employment and Education (cont.)

I.2.c. How well did your education at Western prepare you for success in the job market? (Asked of respondents who indicated in I.2. that their current principal activity is "employment, full-time paid", "employment, part-time paid" or indicated in B.2.b.6.a. that they have sought employment since graduating from Western or indicated in B.2.b.6. that they are currently employed.)

	BIOL	CHEM	CSCI	ETEC	GEOL	MATH	PHYS	Other	CST	WWU
N	29	15	21	39	13	19	15	4	151	954
Not at all	3%			3%	23%		7%		4%	6%
A little	7%	7%		8%	8%	11%	40%	25%	11%	12%
Somewhat	48%	33%	19%	13%	23%	21%	40%		27%	27%
Well	35%	33%	57%	41%	46%	47%	13%		38%	36%
Very well	7%	27%	24%	36%		21%		75%	21%	19%

I.2.d. How valuable were the following in preparing you for your {current/primary} job? (Asked of respondents who indicated in I.2. that their current principal activity is "employment, full-time paid", "employment, part-time paid" and did not major in general studies while at Western.) (Five-point scale of "not at all valuable" to "very valuable.") (Means are reported.)

	BIOL	CHEM	CSCI	ETEC	GEOL	MATH	PHYS	Other	CST	WWU
N	18	9	16	32	9	14	8	4	107	737
Classes at Western in your major	3.7	4.1	4.6	4.6	3.9	4.3	4.1	3.8	4.2	4.0
Classes at Western outside your major	3.1	2.9	2.2	2.7	2.8	2.9	2.9	3.5	2.8	3.1
Other experiences at Western	3.4	4.0	3.3	3.3	3.7	4.1	3.6	4.5	3.6	3.8

Employment and Education (cont.)

I.2.e. How satisfied are you with your {current/primary} job? (Asked of respondents who indicated in I.2. that their current principal activity is "employment, full-time paid" or "employment, part-time paid.")

	BIOL	CHEM	CSCI	ETEC	GEOL	MATH	PHYS	Other	CST	WWU
N	18	9	16	31	9	14	8	4	106	744
Not at all satisfied	6%	11%			11%		25%		5%	5%
A little satisfied	11%		6%			7%	25%		6%	8%
Somewhat satisfied	39%	22%		10%	11%	21%	13%		15%	21%
Satisfied	33%	11%	63%	45%	44%	57%			39%	35%
Very satisfied	11%	56%	31%	45%	33%	14%	38%	100%	36%	31%

I.2.f. How likely are you to stay in the same type of work for the next three years? (Asked of respondents who indicated in I.2. that their current principal activity is "employment, full-time paid" or "employment, part-time paid.")

	BIOL	CHEM	CSCI	ETEC	GEOL	MATH	PHYS	Other	CST	WWU
N	18	9	16	32	9	14	8	4	107	730
Not at all likely	22%	22%		3%	33%		25%		11%	19%
A little likely	17%	22%	13%	3%		14%			9%	13%
Somewhat likely	33%	11%	13%	9%	11%	14%	25%		16%	16%
Likely	17%		6%	22%	22%	21%	13%		15%	20%
Very likely	11%	44%	69%	63%	33%	50%	38%	100%	49%	33%

Employment and Education (cont.)

I.2.g. In which industry/field is your {current/primary} job? (Asked of respondents who indicated in I.2. that their current principal activity is "employment, full-time paid" or "employment, part-time paid" or indicated in B.2.b.6. that they are currently employed.)

	BIOL	CHEM	CSCI	ETEC	GEOL	MATH	PHYS	Other	CST	WWU
N	27	13	19	33	11	18	10	4	131	817
Accounting										3%
Agriculture/Natural Resources/Environment	22%	8%			9%				6%	3%
Arts/Design/Planning				9%					2%	6%
Communication										1%
Computer Science/Statistics	4%	8%	84%			28%	10%		15%	5%
Consulting	4%		5%		9%				2%	1%
Education/Teaching		23%	11%		18%	22%	10%	100%	12%	16%
Engineering				88%	9%	6%	40%		27%	5%
Financial Services						11%			2%	3%
Food service					9%	6%			2%	5%
Government		8%							1%	2%
Health care	7%					6%	10%		3%	6%
Hospitality/Travel										2%
Law enforcement										0%
Legal										1%
Management/Administration					9%				1%	5%
Marketing/Sales	11%			3%			10%		4%	9%
Non-profit	4%								1%	5%
Politics										0%
Research	33%	31%				6%			11%	3%
Social Services	4%				9%				2%	4%
Other, please specify below	11%	23%			27%	17%	20%		11%	17%

Employment and Education (cont.)

I.2.h. When were you offered the first career-oriented job you have held since graduation? (Asked of respondents who indicated in I.2. that their current principal activity is "employment, full-time paid" or "employment, part-time paid.")

	BIOL	CHEM	CSCI	ETEC	GEOL	MATH	PHYS	Other	CST	WWU
N	18	9	16	32	9	14	8	4	107	748
While still attending Western	22%		38%	28%		14%	13%	25%	22%	21%
Within three months after graduating from Western	6%	44%	25%	19%	11%	50%	13%	75%	23%	25%
Three to six months after graduating from Western	33%	56%	25%	22%	33%	14%	25%		26%	19%
More than six months after graduating from Western	17%		6%	28%	22%	21%	38%		20%	19%
I have not held a career-oriented job since graduation	22%		6%	3%	33%		13%		9%	16%

Employment and Education (cont.)

I.2.i. How did you learn about your {current/primary} job? (Asked of respondents who indicated in I.2. that their current principal activity is "employment, full-time paid" or "employment, part-time paid.")

	BIOL	CHEM	CSCI	ETEC	GEOL	MATH	PHYS	Other	CST	WWU
N	18	9	16	32	9	14	8	4	107	741
Newspaper										1%
Online job sites	28%	44%	25%	19%	22%	7%	13%		21%	26%
Employer website	17%	22%	13%	25%	33%	7%			18%	13%
Previously employed there	22%		6%						5%	7%
Internship			6%	13%		14%	38%	50%	11%	8%
Networking/personal contact/friend or family	28%		25%	25%	33%	57%		25%	26%	28%
Employment agency		11%	6%	3%					3%	3%
Faculty/Advisor	6%	11%	6%	13%					7%	3%
Western major department				3%		7%			2%	1%
Western's Career Services Center (career fairs, Viking CareerLink, on-campus recruiting)		11%	6%			7%	13%		4%	4%
Professional organization							13%		1%	1%
Started a business										0%
Other, please specify below:			6%		11%		25%		4%	5%

Employment and Education (cont.)

I.2.j. What is your total pre-tax annual salary? OR Including all your jobs, what is your pre-tax annual salary? (Asked of respondents who indicated in I.2. that their current principal activity is "employment, full-time paid".) (Respondents reporting more than one job were asked to include all jobs). (OSR excluded cases where those employed full-time reported annual salaries of \$15k or lower, and where those employed full- or part-time reported annual salaries of \$200k or greater.)

	BIOL	CHEM	CSCI	ETEC	GEOL	MATH	PHYS	Other	CST	WWU
N	12	8	13	28	8	13	6	3	88	511
Mean	\$31,220	\$41,075	\$75,430	\$53,203	\$39,506	\$49,531	\$42,400	\$34,667	\$48,942	\$38,014

I.2.k. Does your compensation for this job include the following benefits? Check all that apply. (Asked of respondents who indicated in I.2. that their current principal activity is "employment, full-time paid" or "employment, part-time paid.")

	BIOL	CHEM	CSCI	ETEC	GEOL	MATH	PHYS	Other	CST	WWU
N	18	9	16	32	9	14	7	4	106	726
Health insurance	50%	89%	94%	84%	44%	86%	43%	75%	74%	69%
Dental insurance	50%	89%	94%	72%	44%	79%	43%	100%	70%	58%
Retirement savings plan	50%	89%	94%	72%	67%	86%	29%	75%	71%	57%
Other	6%	11%	50%	31%		14%	14%	25%	22%	17%
None	44%	11%	6%	16%	33%	14%	57%		23%	28%

I.2.l. Were you offered any special compensation to entice you to accept this position? Check all that apply. (Asked of respondents who indicated in I.2. that their current principal activity is "employment, full-time paid" or "employment, part-time paid.")

	BIOL	CHEM	CSCI	ETEC	GEOL	MATH	PHYS	Other	CST	WWU
N	18	9	15	31	9	14	7	4	104	717
Signing bonus			13%	19%		7%	14%		9%	3%
Stock options	6%		27%	3%					6%	4%
Moving expenses		22%	27%	32%					15%	5%
Other	6%	11%		7%		7%	14%		5%	5%
None	89%	67%	67%	55%	100%	93%	86%	100%	76%	87%

Educational Debt

I.3. How much is currently owed for your education? Include amounts borrowed through credit cards, student loans and other loans.

	BIOL	CHEM	CSCI	ETEC	GEOL	MATH	PHYS	Other	CST	WWU
N	35	19	19	39	13	21	15	4	161	967
Mean	\$12,406	\$19,053	\$13,158	\$14,787	\$25,054	\$12,531	\$14,480	\$22,250	\$15,087	\$14,380

I.3.a. Has your educational debt impacted your decisions regarding the following? (Asked of respondents who indicated in I.3. that they have debt.)

	BIOL	CHEM	CSCI	ETEC	GEOL	MATH	PHYS	Other	CST	WWU
N	19	11	9	26	7	10	11	2	92	559
Job choices										
Yes	37%	27%	22%	39%	57%	60%	46%	100%	41%	61%
No	63%	73%	78%	62%	43%	40%	55%		59%	39%
Educational goals										
Yes	53%	36%	22%	42%	57%	60%	46%	100%	46%	68%
No	47%	64%	78%	58%	43%	40%	55%		54%	32%
Where you live										
Yes	47%	36%	33%	39%	57%	60%	36%	100%	44%	61%
No	53%	64%	67%	62%	43%	40%	64%		57%	39%